

DRAGONFLY
AFRICA



safari



Experience The Wild with The Big Five

Tel +27 11 219 5600 | info@dragonfly.co.za | www.dragonfly.co.za
Southern and East Africa's leading travel group.



Map of Safari Destinations	3
Introduction	4
Access	4
Climate	5
Sabi Sabi	6
Timbavati	12
Kwazulu Natal Lodges	15
Madikwe Lodges	16
Pilanesberg Lodges	18
Eastern Cape Lodges	19
Activities	20
Dining	21

safari

MAP



safari

INTRODUCTION



African safaris are without a doubt the most soul enriching experience one can have in life. With over 20 national game parks, three transfrontier parks and many private reserves, South Africa is blessed with an abundance of safari options that will guarantee a true, African experience.

Whether it's a sighting of the Big 5 (Elephant, Lion, Leopard, Rhino, Buffalo), a unique dining experience, total relaxation or adventure activities that are the priority, a South African safari will surpass all needs and expectations.

ACCESS



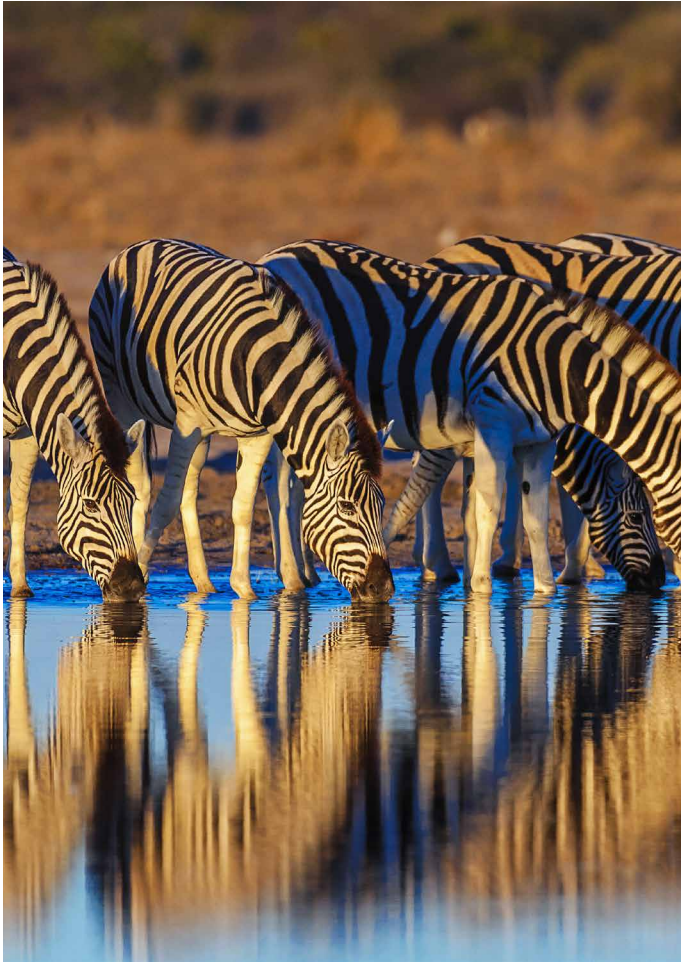
There are scheduled international flights direct to Cape Town, Johannesburg and Durban with regular domestic flight connections from these destinations to Kruger, Durban and Port Elizabeth. There are also now scheduled flights available for direct access between Cape Town, Durban and Johannesburg to Kruger at Hoedspruit, Skukuza or KMIA (Kruger Mpumalanga International Airport) Airports.

South African safari destinations are easily accessible by road or charter flight and many have the added benefit of being located in malaria-free areas. There are also now scheduled flights between KMIA and Livingstone, Zambia as well as Vilanculos, Mozambique.

Road transfers from airports/airstrips to game lodges are dependent on the location of the lodge – ranging from 10 minutes at private lodge airstrips up to 2.5 hours if travelling by road from Kruger Mpumalanga International Airport.

safari

CLIMATE



The South African summer season runs from October to March and the winter period falls between May and July. Although South Africa's climate is affected by regional differences, the climate is generally mild throughout the year with predominantly summer rainfall. The Western Cape region is the only area that has a mild, Mediterranean climate with winter rainfall in June, July and August.

In the main game viewing areas of Mpumalanga (Kruger), Limpopo and KwaZulu Natal, the summer temperatures range from 61°F to 90°F (16°C to 32°C) although certain areas can experience maximum temperatures in excess of 104°F (40°C). The winter temperatures in these regions cool down to between 41°F and 75°F (5°C and 24°C), although in some instances temperatures can drop to below 32°F (0°C).

The Northern region experiences a predominantly summer rain fall period with hot, sometimes humid weather. Winter days are mild with evenings and early mornings being chilly. Due to high summer temperatures, spring or autumn are usually the best times to plan a comfortable safari experience.

KWAZULU-NATAL - Safari												
Averages	JAN	FEB	MAR	APR	MAY	JUN	JUL	AUG	SEPT	OCT	NOV	DEC
Max temp °C	27.8	28	26	24.5	23	22.6	22	22.8	23.3	24	25.2	26.9
Min Temp °C	21.1	21.1	20.2	17.4	13.8	10.6	10.5	12.5	15.3	16.8	18.3	20.2
Max temp °F	82	82.4	81	78	76	73	72	73	73.4	75	77	80
Min temp °F	69	69	68	63	56	51	50	54.5	59	62	64	68
Rainfall mm	134	113	120	73	59	28	39	62	73	98	108	102

MPUMALANGA - Safari												
Averages	JAN	FEB	MAR	APR	MAY	JUN	JUL	AUG	SEPT	OCT	NOV	DEC
Max temp °C	32.6	32	31.2	29.4	28	26	26	27.3	29.3	29.8	30.6	32
Min Temp °C	20.6	20.4	19	15.4	10	5.6	5.7	8.7	12.8	16	18	19.7
Max temp °F	90	89	97	84	82	78	78	80	84	85	86	89
Min temp °F	69	68	66	59	50	42	42	47	55	60	64	67
Rainfall mm	126	142	107	54	33	55	66	27	100	82	83	104

Singita Private Game Reserve | 5* Properties | 66 rooms | www.singita.com

Singita Ebony Lodge - 12 suites

Singita Boulders Lodge - 12 suites

Singita Castleton - 6 suites

Lebombo & Sweni

Singita Lebombo - 15 suites

Singita Sweni - 6 suites

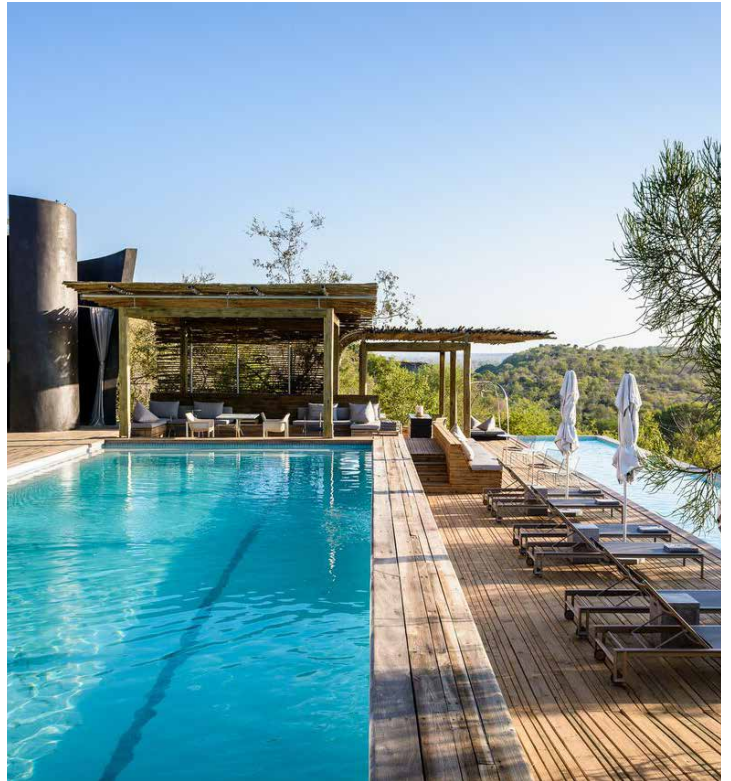
The Singita Ebony & Boulders Lodges are located in the Sabi Sand region of the Kruger National Park. Each lodge has been created as a tribute to the unique splendour of the African wilderness surrounding it. Ebony Lodge and Boulders Lodge have distinguished themselves on the international resort stage having won every major award globally. Both remain unmatched in Africa and among exclusive resorts the world over.

Formerly the family home of Singita founder Luke Bailes' grandfather, Singita Castleton is an exclusive use lodge set within Singita Sabi Sands. There are six individual cottages within the grounds, catering for up to 12 people. It is steeped in history, capturing the spirit of the original Castleton house, giving the lodge a historical and comforting nature.

Singita was granted the rights to a twenty year concession in the southeast corner of the Kruger National Park. It is against some of the most dramatic scenery and pristine wilderness that Africa has to offer that Singita Lebombo and Singita Sweni Lodges have been developed.

The Lebombo concession is one of the most picturesque and pristine regions in The Kruger Park where some of the highest concentrations of game are seen on safari.

Access to all lodges is best via direct charter or through Skukuza or Nelspruit (KMIA) Airports.



safari

SABI SANDS

Sabi Sabi Private Game Reserve | 5* Property | 52 suites | www.sabisabi.com

Bush Lodge - 25 suites (incl. 2 x two bedroom villas)

Earth Lodge - 13 suites

Selati Camp - 7 suites

Little Bush Camp - 6 suites

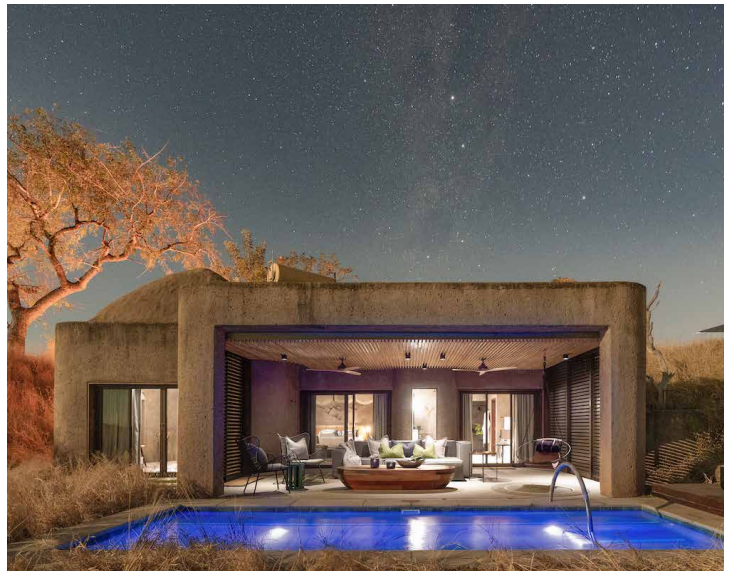
Sabi Sabi Private Game Reserve is home to four of the most acclaimed 5-Star lodges, setting world-class standard in luxury accommodation, service, cuisine, special facilities and exceptional wildlife encounters.

The Sabi Sabi philosophy of 'yesterday, today and tomorrow' stems from over 100 years of safari experience; a history richly woven into the atmosphere of each private lodge.

South Africa and its warm hospitality echoes through the style of every one. Sabi Sabi defines eco-tourism as the interdependence of tourism, conservation and local community thereby ensuring the optimum tangible benefit of each of the above.

Imagine the Africa of the great safari era, when blazing sunsets melted into lantern lit romance and service was an effortless whisper. For groups who take over multiple lodges it is possible to arrange a joint bush dinner.

Access is best via Skukuza Airport (a 40 minute 4x4 transfer) or direct into Sabi Sabi Airstrip via private charter (a 15 minute 4 x4 transfer).



Lion Sands | 5* Property | Various | www.lionsands.com

Lion Sands River Lodge - 18 rooms

(8 luxury, 6 superior luxury & 4 River suites)

Ivory Lodge - 9 villas (8 single villas, 1 Fish Eagle Villa)

Kingston, Chalkley's & Tinyeleti tree houses - 3

Lion Sands Tinga Lodge - 9 suites

Lion Sands Narina Lodge - 9 suites

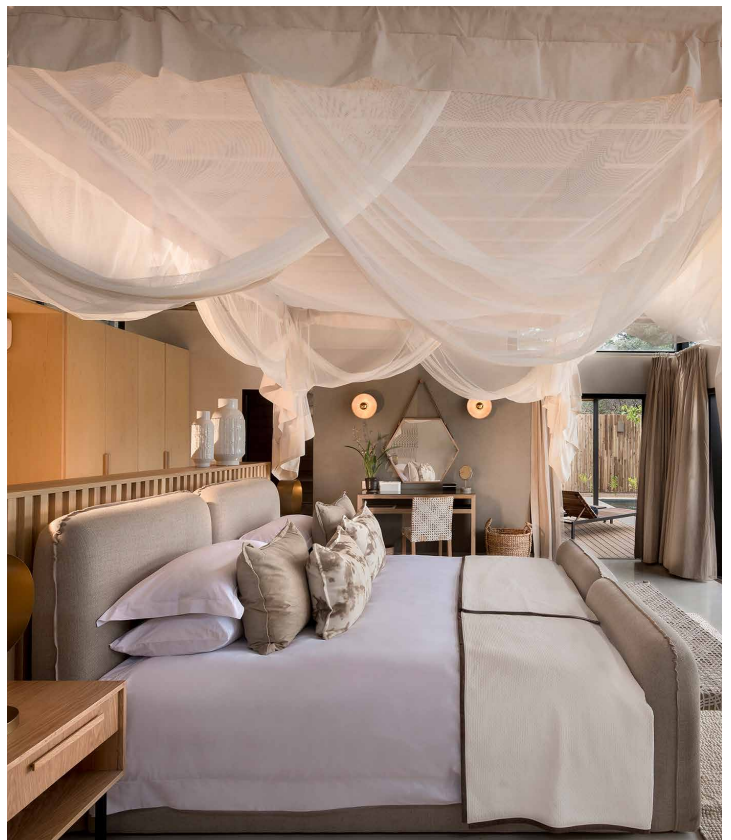
Family run since 1933, Lion Sands is located in the world-famous Sabi Sand Game Reserve on the banks of the Sabie River. Lion Sands will excite your spirit through unforgettable experiences. Direct access is from Skukuza Airport or via private charter into the lodge airstrip.

The focus of Lion Sands Ivory Lodge is simplicity and privacy in an ultra-luxurious setting. When not enjoying the private swimming pool attached to your enticing villa, relaxing in the library lounge or enjoying a world-class glass of wine in the private bar, there are many other activities to look forward to.

For the rebuilt Lion Sands Ivory Lodge, designers have taken their cue from Mother Nature to create a lodge built 'of the earth', with natural materials which will only enhance the surrounding bush environment.

Recently renovated, River Lodge is the soul of Lion Sands, its focus being about spirit, warmth and nature. The lodge is surrounded by trees dating back 800 years and the family of staff will make you feel relaxed and at home.

Apart from the exciting game drives and bush dinners on offer, other activities to choose from whilst visiting Lion Sands include a refreshing swim in one of the pools on the premises, taking advantage of the health spa and gym or watching the animal action from a secluded bird hide or the deck overlooking the river.



Londolozi | 5* Property | 32 suites and chalets | www.londolozi.com

Private Granite Suites - 3 suites

Pioneer Camp - 3 suites

Tree Camp - 6 suites

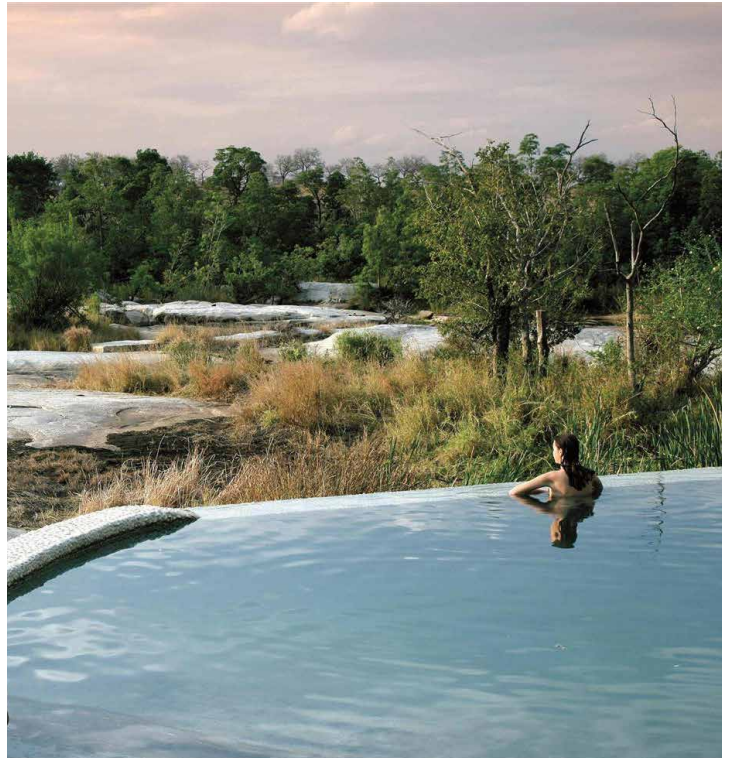
Varty Camp - 10 (2 superior chalets, 8 chalets)

Founders Camp - 10 (3 superior family chalets, 7 superior chalets)

Londolozi is one of the original pioneering Private Game Reserves of the eco-tourism industry in South Africa and is a family run, stand alone operation. The root of the word Londolozi is Zulu and means "protector of all living things" – an ambitious conservation ethic that Londolozi embraces in its sensitivity to the natural world. Londolozi was the first game reserve in the world to be accorded Relais & Chateaux status, reinforcing its commitment to luxurious accommodation, fine cuisine and exceptional service. It is situated on the Sand River in the very heart of the Sabi Sand Game Reserve. Access is via Skukuza Airport or direct charter.

The five Londolozi Lodges offer a variety of accommodation types to suit all budgets. The Private Granite Suites are the crème de la crème of the Londolozi portfolio, closely followed by Pioneer Camp and Tree Camp. These three properties are all part of the Relais & Chateaux group of elite hotels. Tree Camp and the Private Granite Suites do not allow children under the age of 16 unless they are taken for exclusive use. All suites have a private pool.

Varty Camp and Founders Camp are slightly larger and perfect for families and small groups and accept children of four years and older. The chalets at Varty Camp have private pools. Varty Camp is also home to the boutique, The Healing House spa, Gym, Yoga Deck and Library. Guests from all camps are invited to make use of these facilities.



&Beyond Kirkman's Kamp & Tengile River Lodge | 4* Property | various | www.andbeyond.com

&Beyond Kirkman's Kamp - 12 suites

The moment you walk into the main building at Kirkman's Kamp you'll think you've been transported back in time. The fact that the main lawn has warthog grazing on it instead of a neatly dressed party playing croquet does nothing to dispel this illusion; in fact, it all adds to the ambiance of this 1920's South African homestead.

Each of the 12 guest suites boasts spectacular views of the unspoiled wilderness surrounding the Sand River. Private verandas attached to each suite offer a secluded spot to drink in the breathtaking views. Old-fashioned bedsteads combine seamlessly with modern comfort and souvenirs of bygone years to create a nostalgic safari atmosphere.

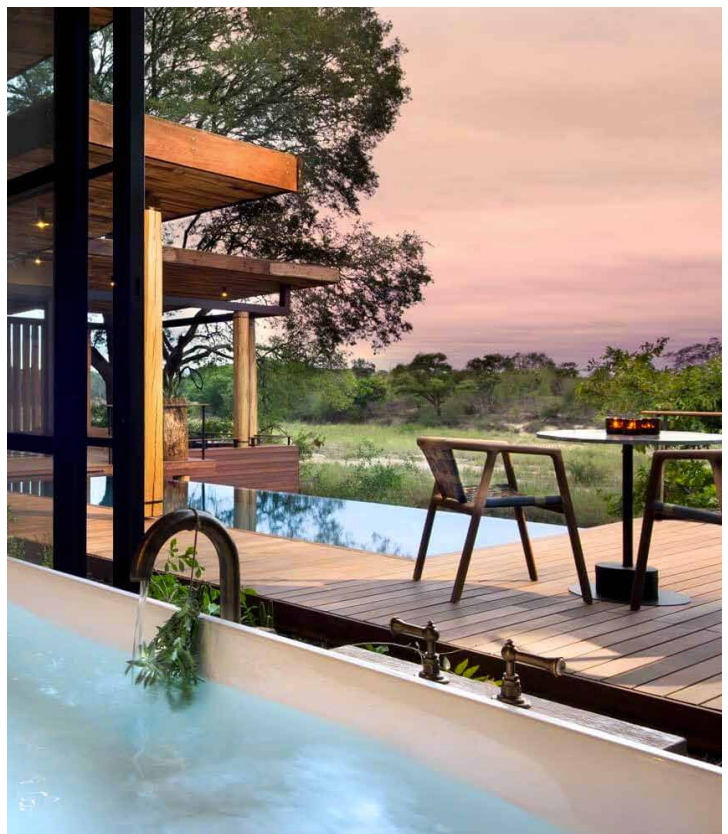


&Beyond Tengile River Lodge - 9 suites

Meaning "tranquil" in the local Tsonga language, &Beyond Tengile River Lodge holds an idyllic private position on a bend of the Sand River, with serene river views from every vantage point. Space and flow are the heroes of this inspired lodge design.

The lodge features nine secluded suites, in the shade of the cool riverine forest, each with soothing river outlooks. Space is taken to an unprecedented level in these guest suites. In addition to a master bedroom, bathroom and outdoor shower, there is a lounge, dining area, and bar, together with a private deck, swimming pool, and outdoor seating and dining area.

Access is easy via Skukuza Airport followed by a 20 minute transfer.



safari

SABI SANDS

Ulusaba | 5* Property | 20 rooms & suites | www.ulusaba.virgin.com

Rock Lodge - 8 Rooms (including Master Suite, Makwela Suites, Rock Cliff rooms and two bedroom Rock Suites)

Cliff Lodge - 2 suites

Safari Lodge - 10 rooms

Ulusaba is Sir Richard Branson's private game reserve in South Africa. The name Ulusaba means 'place of little fear', so named because the koppie, or hill, on which Rock Lodge sits provided the ancient Shangaan tribal warriors with the perfect lookout point.

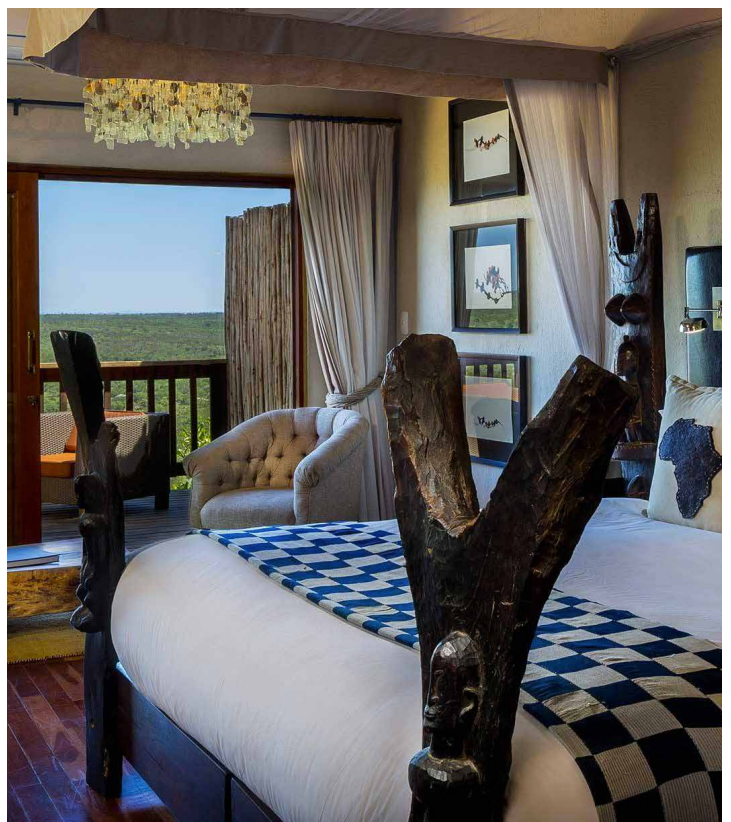
Ulusaba has 20 rooms and suites spread over 3 lodges: Rock Lodge, including the beautiful Cliff Lodge, and Safari Lodge.

You're on top of the world at Rock Lodge! Survey miles of game-rich bush as you stand 800 feet (244 metre) above the wilderness. Located a short walk from the Main House at Rock Lodge, Cliff Lodge features two magnificent suites offering guests the ultimate in safari luxury. Ideal for a family.

Safari Lodge fits snugly into the bush located beneath a canopy of ancient trees on the edge of a dry riverbed. The rooms at Safari Lodge include a Treehouse Suite overlooking the nearby Xikwenga Dam while other rooms have their own private plunge pools.

Ulusaba sits entirely within the Sabi Sand Reserve near Kruger National Park, surrounded by 13 500 hectares (about 33 000 acres) of open bush.

Access is via direct charter into the Ulusaba private airstrip. This is a 30 minute hop from Nelspruit (KMIA) or 20 minutes from Skukuza (SZK).



safari

TIMBAVATI

Kapama Private Game Reserve | 5* Property | 111 rooms | www.kapama.co.za

Kapama River Lodge - 64 (20 spa suites, 44 rooms)

Kapama Buffalo Camp - 10 safari tents

Kapama Karula - 12 luxury villas

Kapama Southern Camp - 25 suites

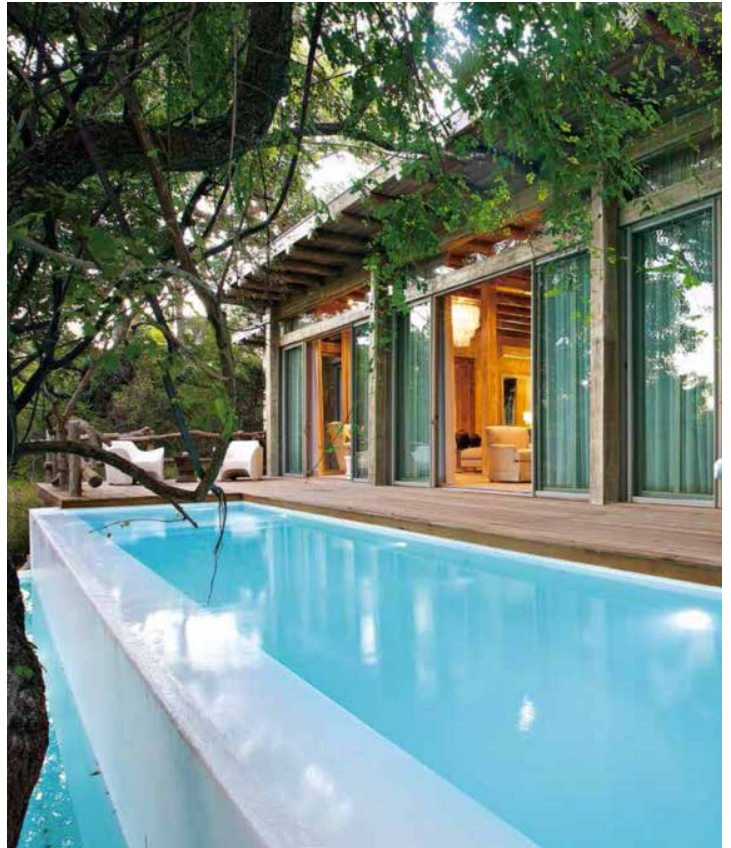
Kapama Private Game Reserve occupies a vast area between the northern Drakensberg mountains and the Greater Kruger National Park. In the Limpopo Province the reserve covers an area of approximately 32 120 acres (13 000 hectares) and is characterised by rolling savannah grasslands and riverine forests.

River Lodge is ideal for groups and features The River Lodge Spa and conference facilities.

With its light, airy, open spaces and views from every angle, Karula is truly the pride of Kapama and their flagship lodge. Southern Camp has a more relaxed atmosphere. High in the treetops, accessible only by elevated wooden walkways, lie the old-world luxury tents of Buffalo Camp.

The reserve supports no less than 42 mammal species and approximately 350 bird species. Amongst the mammal species is the 'Big 5' - Lion, Leopard, Elephant, Buffalo and Rhino. Kapama is the perfect location for bush walks.

Apart from the fact that Kapama remains the largest single owner game reserve in the region, it is also situated adjacent to Eastgate Airport (Hoedspruit), which has daily direct flights to and from Johannesburg and Cape Town, and offers open vehicle transfers directly from Eastgate to any of the lodges at Kapama.



safari

TIMBAVATI

Thornybush Game Lodge | 5* Property | 20 suites | www.thornybush.co.za

Suites - 18

Family rooms - 2

Other lodges at Thornybush include:

5* River Lodge - 4 suites

5* Shumbalala - 4 suites

Adjacent to the Greater Kruger National Park, within the famous Thornybush Nature Reserve is Thornybush Game Lodge.

The lodge consists of 18 suites, 2 family suites and accommodation caters for a maximum of 40 people collectively. Each luxury suite has an ensuite bathroom, indoor and outdoor showers and private deck with a view of the seasonal Monwana River course or riverine thicket and has been carefully designed and spaced to provide privacy.

The main pool area, lounge, and dining room all look onto the river bed. Meals are served at the lodge restaurant, the boma and various bush sites. Unique incentive activities include "bundu bashing", an obstacle course in safari vehicles, and bush orienteering on foot.

The lodge also boasts a 60-seater conference centre located conveniently two minutes walk from the reception area. The state-of-the-art Amani African Spa facility tops the agenda for discerning guests.

Access is most convenient from Hoedspruit Airport. The road transfer is approximately one hour. There are now direct flights from Johannesburg and Cape Town to Hoedspruit.



safari

TIMBAVATI

&Beyond Ngala Game Reserve | 5* Property | 30 suites | www.andbeyond.com

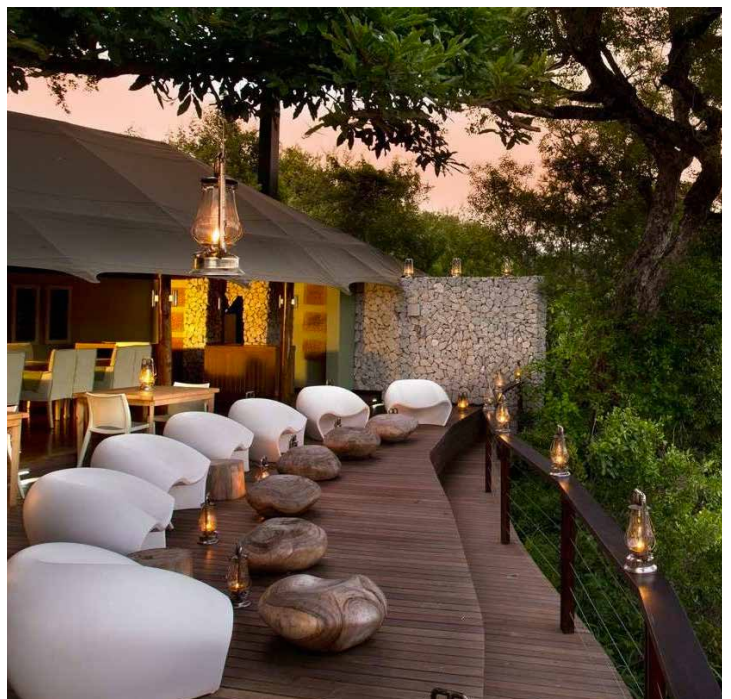
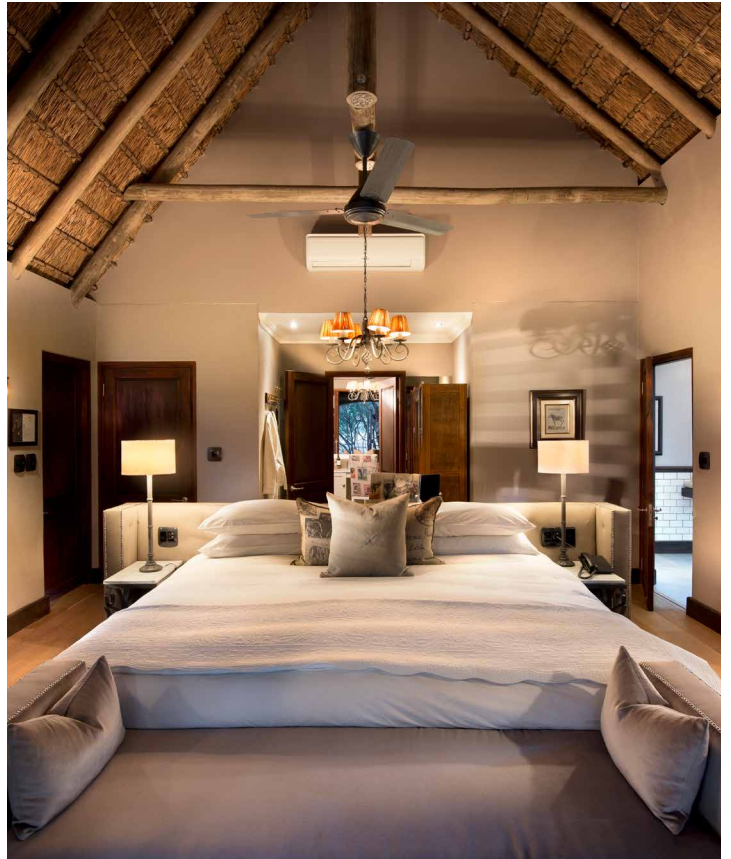
&Beyond Ngala Safari Lodge - 21
(17 cottages, 3 family cottages, 1 private family suite)
&Beyond Ngala Tented Camp - 9 tents

Meaning "lion" in Shangaan, Ngala lives up to its name, supporting several prides of these powerful cats. It was the first private game reserve to be incorporated into Kruger National Park and is part of one of Africa's most innovative conservation partnership agreements. Ngala is home to two magnificent lodges: The recently renovated &Beyond Ngala Safari Lodge and the luxurious &Beyond Ngala Tented Camp. The two lodges are approximately 40 minutes drive apart.

Ngala Safari Lodge features 20 classic thatched cottages and the luxurious Safari Suite. Each of the romantic cottages offers a private veranda amid the African bushveld. The main pool area, lounge, and dining room all look onto an active waterhole. Meals are served at the lodge restaurant, the boma and various bush sites including a unique pancake stop! Ngala Tented Camp was constructed with a light footprint - built on platforms, each of the 9 spacious, air conditioned safari tents was cleverly designed to incorporate existing trees.

The camp's lap pool, merging with the contours of the riverbank, is perfect for idle afternoon game viewing. Theatrical al fresco dinners in the dry riverbed are unforgettable. Access is most convenient from Hoedspruit Airport.

There are now direct flights from Johannesburg and Cape Town to Hoedspruit. Alternatively, an air charter can be arranged directly to Ngala. The flight time from Johannesburg to Ngala is approximately one and a half hours.



Phinda Private Game Reserve | 5* Property | 57 suites | www.phinda.co.za

&Beyond Phinda Forest Lodge - 16

&Beyond Phinda Mountain Lodge - 25

&Beyond Phinda Rock Lodge - 6

&Beyond Phinda Vlei Lodge - 6

&Beyond Phinda Homestead - 4

Located in KwaZulu-Natal and showcasing one of the continents finest Big 5 game viewing experiences, Phinda is described as "Seven Worlds of Wonder" due to its seven distinct habitats.

A magnificent tapestry of woodland, grassland, wetland and forest, interspersed with mountain ranges, river courses, marshes and pans, Phinda has a rich diversity of eco-systems and wildlife.

Home to 2 470 acres (1 000 hectares) of Africa's remaining rare dry sand forest, the reserve lies in close proximity to the unspoiled beaches and spectacular reefs of the Indian Ocean, offering a unique combination of beach and bush adventure and an opportunity to see the Leatherback Turtles laying eggs on the beach at specific times of the year.

Access by road is from Durban - duration is 4 hours. Alternatively fly into Richards Bay followed by a 1½ hour road transfer. A third option is to charter directly to the lodge airstrip from any of the major cities.

Situated in the northern KwaZulu-Natal area, Phinda borders conservation areas such as the Greater St Lucia Wetlands park - a world Heritage Site and is close to the Mozambique border.

This unique Reserve has earned prestigious awards and recognition as being one of the world's premier benchmarks for responsible, sustainable eco tourism.



Madike Safari Lodge | 5* Property | 20 suites | www.more.co.za

Madikwe Lelapa Lodge - 12 suites

Madikwe Kopano Lodge - 4 suites

Madikwe Dithaba Lodge - 4 suites

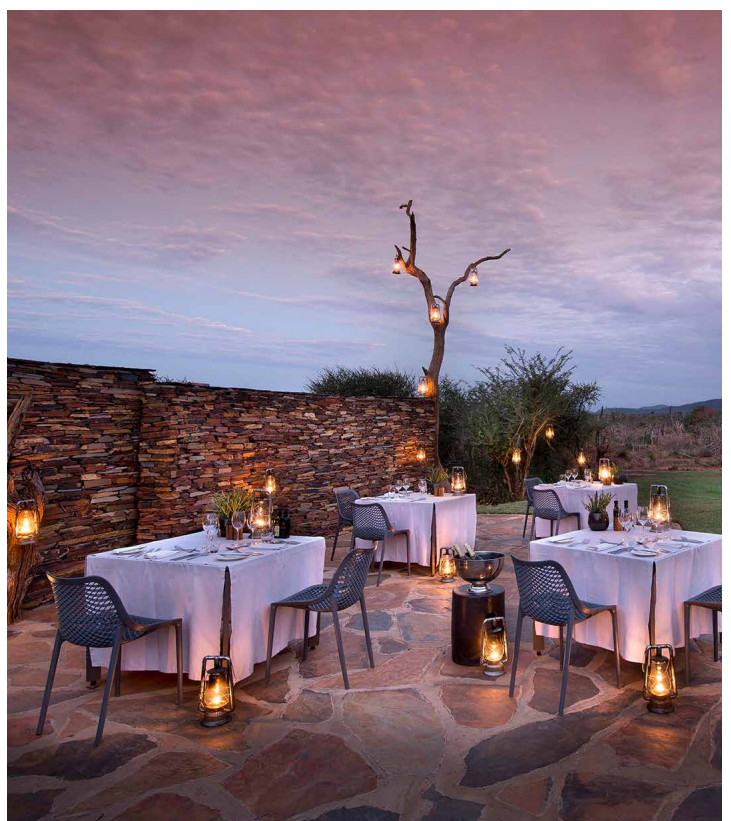
Madikwe Safari Lodge is situated in Madikwe Game Reserve, one of South Africa's largest and malaria-free sanctuaries. Lelapa (meaning 'family') welcomes guests of all ages. Each suite has indoor and outdoor showers, a fireplace and private plunge pool.

Kopano (meaning 'small gathering') can be booked out on an exclusive basis. The modern lodge, influenced by an African design aesthetic, reminds of a traditional homestead.

Dithaba's (meaning 'mountain') four small, on a hillside overlooking the expansive reserve, each provide a couple's romantic retreat or, together, an exclusive home base for a friend group or family with children while on safari. All three lodges are within walking distance of each other and can be combined for a group or an incentive.

Established over twenty years ago, Madikwe has successfully reintroduced more than 28 species, including lion, elephant and buffalo, as well as black and white rhino. Large numbers of elephant, giraffe and impala occur alongside oryx, springbok and red hartebeest. Both spotted and brown hyena are found in the reserve. The African wild dog, one of the continent's most endangered carnivores, now thrives in the area, with at least two strong packs roaming the reserve.

Access is ideally from Johannesburg. Driving time is 4.5 hours. There is a twice daily flight on Federal Air from OR Tambo International Airport, Johannesburg to Madikwe airstrip. Duration: 50 minutes.



Tau Private Game Lodge | 5* Property | 30 chalets | www.taugamelodge.co.za

Standard Chalets - 20

Deluxe Chalets - 6

Family Unit - 2

Family Suite - 2

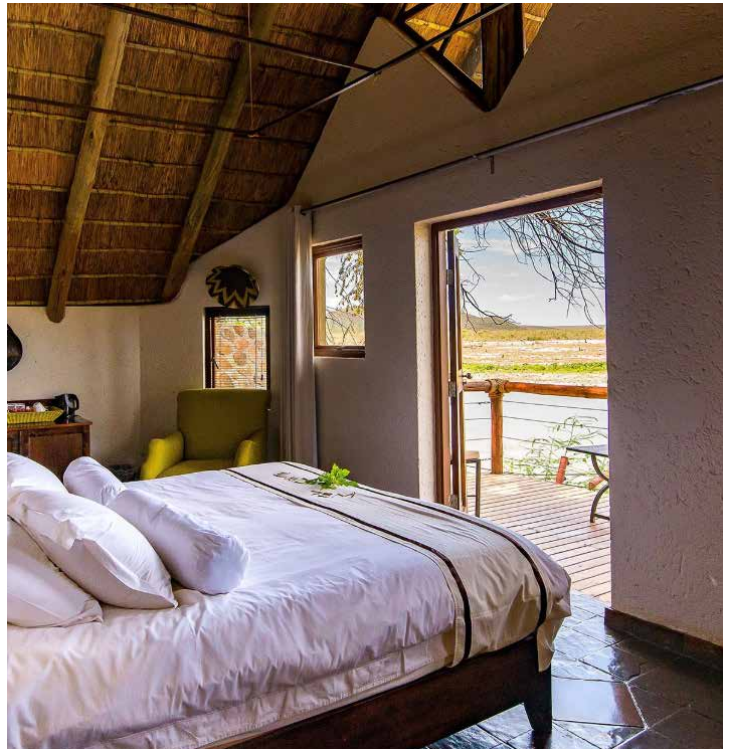
On the far northern border of South Africa lies an area known as the Great Marico, named after the river that runs through this region. It is in this spectacular setting in the Madikwe Game Reserve, that Tau Game Lodge is situated.

The hills of Tshwene-Tshwene and the dramatic ridge of the Dwarsberg Mountains expose rocks of up to 2 630 million years old. Artefacts of the Stone and Iron ages are still found in the Great Marico dust.

The Madikwe National Park forms part of the fourth largest game reserve in South Africa and is located in a malaria-free area which adds to its appeal. Ten thousand animals of 27 major species including wild dog, cheetah, lion, white and black rhino, buffalo and elephant have been reintroduced to Madikwe.

Privately owned, Tau Game Lodge was built in 1995 and overlooks a vast natural waterhole, which attracts a variety of game, as does the diverse vegetation that thrives in the fertile topsoil. The on-site Convention Centre offers a main hall (323y² / 270m² in total) which is made up of three sub-halls.

Access is ideally from Johannesburg. Driving time is 4.5 hours. There are twice daily flights on Federal Air from OR Tambo International Airport, Johannesburg to Madikwe airstrip. Duration: 50 minutes.



Ivory Tree & Shepherd's Tree Game Lodge | 5* Property | 100 rooms | www.aha.co.za

Ivory Tree Game Lodge:

Standard rooms - 64

Suites - 4

Presidential Suite - 1

Family Suite - 1

To the north of the Pilanesberg Game Reserve lies the Ivory Tree Game Lodge. It is situated in the basin of a spectacular amphitheatre in a half moon shape. Game rangers enthral guests while searching for the Big 5 on ten-seater open Land Rovers in this magnificent malaria-free reserve.

Back at the lodge guests can enjoy the picturesque views from the double volume, deep-thatch central facility which houses the bar, lounges, dining room and curio shop and opens on to the rock pool and boma. Ivory Tree Lodge is perfect for groups wanting a malaria-free safari.

The lodge is located 2.5 hours drive from Johannesburg and close to the Sun City Resort.

Shepherd's Tree Game Lodge:

Standard rooms - 26

Executive suites - 4

The Shepherds Tree Game Lodge also lies within the Pilanesberg Game Reserve. The central guest facilities include a rim flow swimming pool, gourmet restaurant, open entertainment decks, cigar lounge, Amani Spa and conference facility. The lodge has a welcoming atmosphere and offers a relaxed social environment for guests, as well as a variety of activities on offer. With commanding bushveld views, the rooms and suites at The Shepherds Tree Game Lodge offer the finest finishes, exquisite architecture and flawless interior design.



safari | EASTERN CAPE LODGES

Shamwari Private Game Reserve | 5* Property | various | www.shamwari.com

Sandile - 9 Premier Tents
Eagles Crag - 9 Junior Suites
Bayethe - 12 Superior Suites
Long Lee Manor - 18 (17 Luxury Rooms, 1 Suite)
Riverdene - 9 Luxury Rooms
Lobengula - 6 Junior Suites
Sarili - 5 Luxury Rooms
Sarili Private Lodge - 1 Lodge (10 guests)
Explorer Camp - 3 Tents

Shamwari incorporates five lodges, one villa and one explorer camp - each one unique. Safari activities at Shamwari include game drives, guided game walks and guided nature walks. On safari expect to see cheetah, rhino, elephant, hippo, lion, buffalo, leopard and a host of other exciting animals.

There are also a number of incentive-style activities on offer such as an Amazing Bush Race and a "Potjie" Cook Off where teams compete to successfully build a fire and produce the best-tasting "potjie" (food cooked in a pot over an open fire).

In addition there are three unique centres to visit: The Shamwari rehabilitation centre is fully registered to provide veterinary care to young, abandoned, orphaned or injured animals. The Dr. Ian Player's Rhino Awareness Centre was created in conjunction with the Wilderness Foundation to highlight the devastating effects of rhino poaching in South Africa.

The Born Free Foundation, Animal Rescue and Education Centre was created to incorporate a museum and educational facility with the goal of creating awareness about the horrific way in which wildlife is exploited in captivity around the world. Access is one hours' drive from Port Elizabeth, or by direct charter to their own airstrip.



Some exciting activities offered by lodges

Please note that some of these activities are only available at certain lodges:

- Rhino Tagging
- Early morning and late afternoon game drives
- Tracking, horse riding and/or bush walks
- Bird watching and wildlife photography sessions
- Scenic flights
- Visits to local schools and communities
- Hot air ballooning
- Sundowner bush cocktails during your game drives
- Pre-dinner drinks and drumming
- Magical Bush Dinners under the African night skies
- Star Gazing
- Bush Encounters - Experience bushcraft and survival skills.



safari

DINING

The delicious fare on offer at luxury safari lodges is well-known worldwide, prepared by chefs who are very often inventive and adventurous with their creations. The taste sensations you experience during your trip will linger as long as your memories of your game experiences do.

There is nothing like a strong coffee with traditional South African rusks to wake you up on a chilly early morning game drive. Upon your return, enjoy a hearty breakfast, with such variety you will find it difficult to choose just one thing. A light but nutritious meal in the heat of the day will tide you over until it is time to enjoy home-baked biscuits with afternoon tea overlooking the waterhole.

Taste a piece of Africa by sampling tasty venison such as springbok carpaccio or kudu steak for your evening meal, making sure to leave a little space to sample the many delights of the desserts on offer.

Most lodges will offer a variety of dining options for groups. Boma (an outdoor reed enclosure) dinner, bush dinner, riverbed dinner, airstrip dinner etc. These can be complemented with local entertainment and African-inspired decor.

