

DESTINATION SHOWCASE

**Botswana**

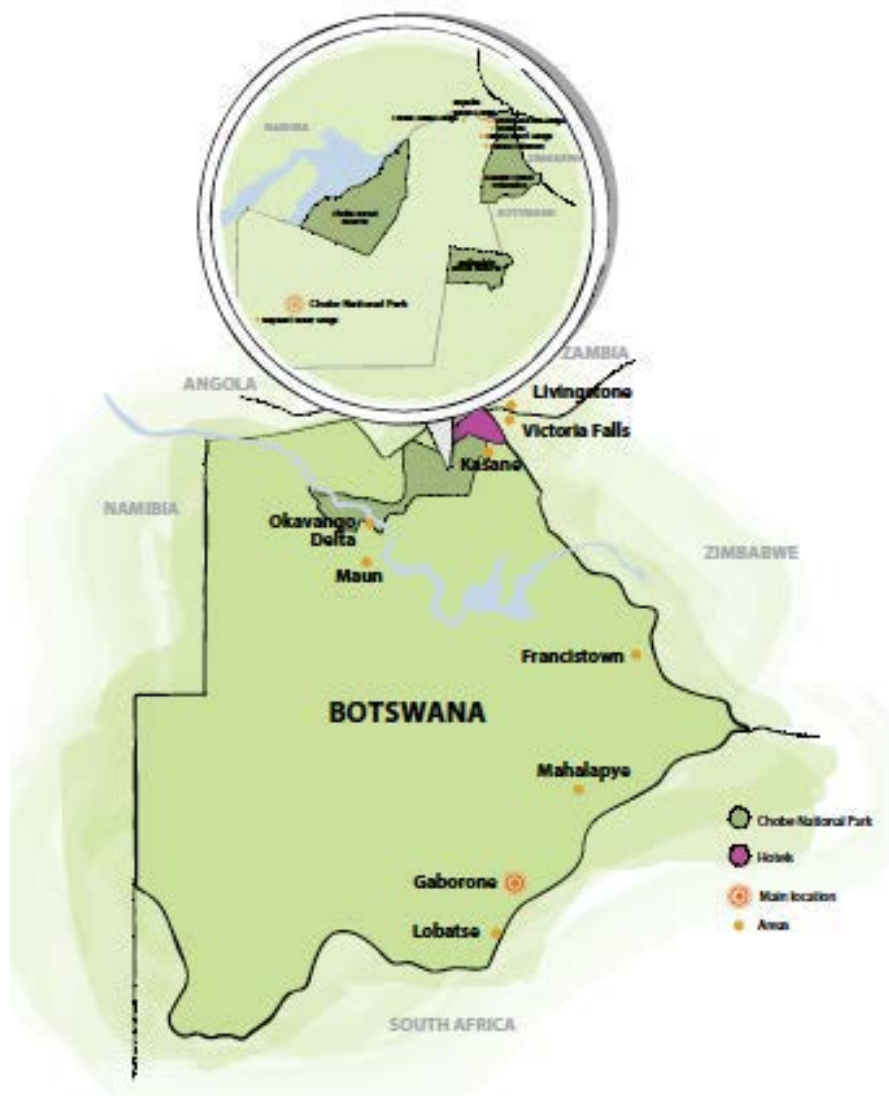
the heartbeat of Africa

Experience Extraordinary

# Index

Map of Botswana .....	1
Introduction .....	2
Access .....	2
Climate .....	3
Hotels .....	4
Highlights .....	13
Unique Activities .....	15
Dining Out .....	18

# Map of Botswana



# Introduction



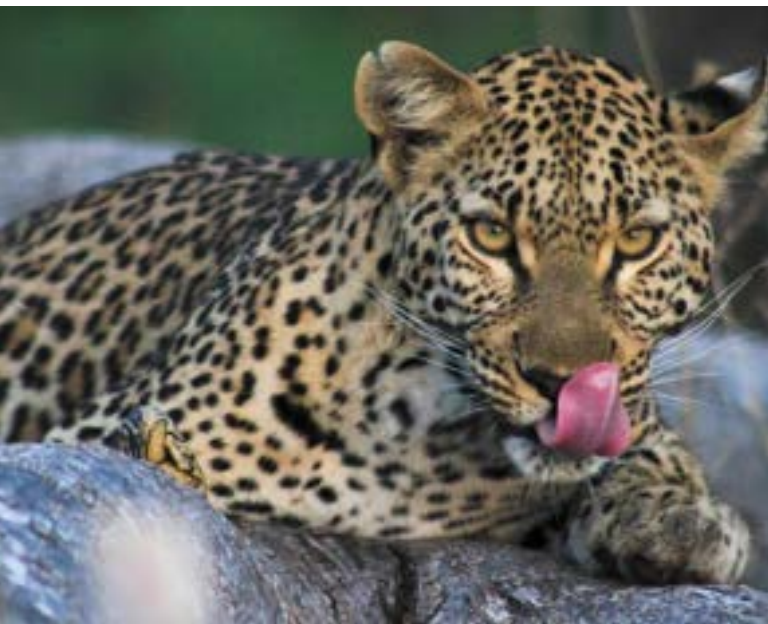
## Botswana

Botswana is renowned for its environmental complexity and contrast. It's diverse terrain, wildlife, plants birds and reptiles make this an excellent safari destination.

Situated in Northern Botswana on the Chobe River, the Chobe National Park encompasses a lush riverine system including flood plains, woodlands and periodic marsh. The unique aspect of this area is that the safari is carried out both on land and water. The diversity of habitats attracts multitudinous game.

In particular, there is an impressive huge elephant population at Chobe - the largest in the world at around 140, 000 Elephants. The park is exceptionally close to the borders of Namibia, Zambia and Zimbabwe, enabling sightseeing trips to other countries as part of your journey. Chobe National Park is one of the most popular attractions but by no means the only reason to visit Botswana.

The delta flood plains of the Okavango, the desolation of the Nxai Salt Pan or the heat seared Kalahari Dessert (home to the legendary San Bushmen), are also locations worth considering when planning side trips in the region.



## Easy Access

Kasane borders Chobe National Park and is accessible by air and road. Daily, scheduled flights are now available between Johannesburg and Kasane International Airport with a flight time of 1.5 hours. Domestic flights are also available from Gaborone (Botswana's Capital) or Maun (gateway to the Okavango Delta) to Kasane as suitable alternatives. Kasane is only a 1.5 hour journey by road and ferry from Livingstone (in Zambia) and the world famous Victoria Falls. SA Airlink is now flying direct from Cape Town to Maun.

The Okavango is best accessed by light aircraft from Kasane or Maun, directly into the lodges' own airstrips.

# Botswana Climate

Botswana's climate is semi-arid and is hot and dry for much of the year. The official 'rainy season' occurs during the summer months, between November and March, but rainfall can be highly erratic and regional. Heavy, localised downpours are usually immediately followed by sunshine. Summers can be hot and humid with the rain affecting roadway access in certain areas.

The best game viewing opportunities occur during the dry winter season, between April and November. During this time, large numbers of animals migrate towards water sources in the Chobe and Delta regions. Calving season usually falls in November and December and is a great time to witness the cycle of regeneration. For avid bird watchers, the Delta is best visited during the rainy season.

Summer days can reach temperatures of between 35 (95 °F) and 40 (104 °F) °C, sometimes higher in the weeks preceding the onset of the cooling rains. Winter skies are clear and the air at this time is exceptionally dry, giving rise to the pleasant warm days but often bitterly cold nights.



During the short autumn and spring periods, i.e. April/May and September/October, the weather tends to be dry.

Daytime temperatures are cooler than during summertime and the evenings warmer than in winter.



## BOTSWANA

Averages	JAN	FEB	MAR	APR	MAY	JUN	JUL	AUG	SEPT	OCT	NOV	DEC
Max Temp C	32.3	32.1	30.6	28	25.5	23.1	22.8	26.2	30.3	32.2	32.2	32.2
Min Temp C	19.6	19.5	17.5	13.4	8.1	4.6	4.1	7.4	12.4	16.5	18	19.1
Max Temp F	90.1	89.8	87.1	82.4	77.9	73.6	73	79.2	86.5	90	90	90
Min Temp C	67.3	67.1	63.5	56.1	46.6	40.3	39.4	45.3	54.3	61.7	64.4	66.4
Rainfall mm	145	80	75	30	8	8	1	1	6	6	60	70

# HOTELS

Sanctuary Stanley's Camp



# Hotels



## Chobe Chilwero Lodge | 5\* Property | 15 cottages | [www.sanctuaryretreats.com](http://www.sanctuaryretreats.com)

Guest cottages - 14

Honeymoon suite - 1

Situated on a hill above the Chobe River, Chobe Chilwero Lodge (or "place of high view") offers exceptional vistas of the surrounding plains.

The 15 luxury thatched cottages each boast luxurious bathrooms, lounges, terraces and private gardens.

The lodge is approximately 30 minutes drive from Kasane Airport.

The cottages are air conditioned and their en-suite facilities include a free-standing bath as well as both an indoor and outdoor shower. Each room comes complete with a hammock overlooking the river. The main lodge has a swimming pool, for cooling off, when you are not surveying the countryside from the viewing patios that are dotted around the lounge and dining areas.

The on-site spa is a big draw card for guests looking to unwind. Excellent cuisine can be savoured along side vintage wines from the temperature-controlled cellar. A high tea on the lawns before the afternoon game drive proves to be a popular pastime. The lodge also has a library and communications centre

Secluded and private, Chobe Chilwero is the perfect place from which to enjoy a relaxed wildlife experience whilst indulging in some preferential treatment.



Exterior



Guest room

# Hotels



## Chobe Game Lodge | 5\* Property | 44 rooms | [www.chobegamelodge.com](http://www.chobegamelodge.com)

Standard rooms - 40

Suites - 4

Chobe Game Lodge enjoys a superb location, being the only lodge actually inside the Chobe National Park, with stunning views of the Caprivi floodplains and Chobe River.

Catering for 100 guests in total, the lodge has 44 tastefully furnished en-suite rooms and 4 elegant luxury suites, all with graceful Moorish architecture and original African artworks.

All rooms have secluded terraces with the suites enjoying the added benefit of private plunge pools and separate lounge areas. Complimentary mini bars, overhead fans and air-conditioning further enhance comfort levels for all guests.

A river cruise that affords indescribable views of vast herds of slow moving elephant and buffalo and the excitement of starlit drumming under Mahogany trees at the riverside Boma - these are just two memorable moments you are likely to take home with you.

When not relaxing poolside or enjoying a lunch at the Terrace Restaurant, the extensive reference library will help you brush up on your wildlife. The Tshwene Bar has full-sized Victorian pool tables and magnificent views to help wind away your afternoon, if you are not already making use of the fully equipped conference room or catching up with the outside world in the business centre.

The recently built boardwalk has added a whole new dimension to game-viewing - simply find your favourite spot along this 250 meter elevated platform and settle down to watch the ever-changing wildlife parade across the river, islands, floodpains and even as far away as Namibia.



River Deck



Guest room



# Hotels



## Mowana Safari Resort and Spa | 4\* Property | 116 rooms | [www.crestamarakanelo.com](http://www.crestamarakanelo.com)

Standard rooms - 112

Suites - 4

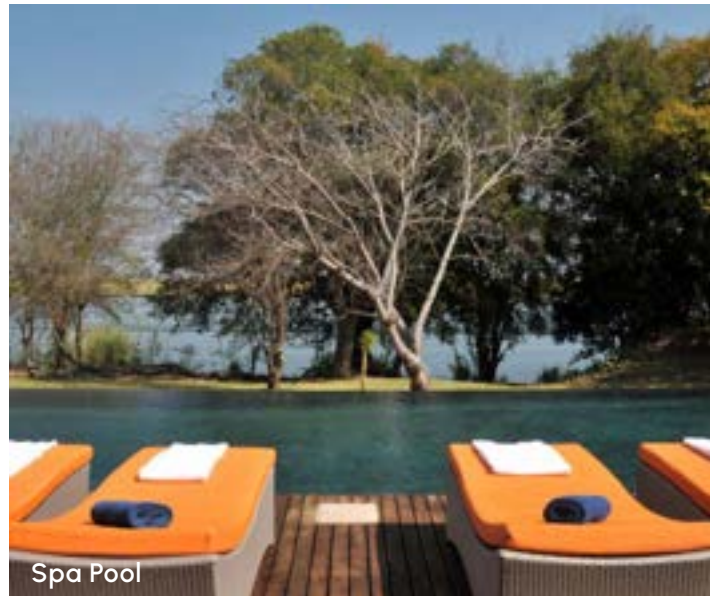
Cresta Mowana Safari Resort and Spa, situated on the banks of the banks of the mighty Chobe River in Kasane, Botswana provides a perfect location from which to explore the magical Chobe region. Just 20 minutes drive from Kasane Airport.

Lodge rooms are well equipped to suit the most discerning traveller, with satellite television, a mini-bar, air conditioning, ceiling fans, mosquito nets and tea / coffee making facilities to make you feel at home.

The Spa at Cresta Mowana is beautifully designed, featuring natural textures and ethnic elements. It features four private treatment rooms complemented by a raise deck overlooking the mighty Chobe River.

Sample a light lunch at the Poolside restaurant, partake in a themed dinner at the Boma Terrace, dine on world class cuisine at The Serondella restaurant, or enjoy canapes over sundowner river views at the Savuti Bar and Lounge.

Conference facilities for up to 100 delegates and a 9-hole golf course enable groups to mix board meetings and club meetings with ease. Game viewing takes the form of both 4x4 land safari into Chobe National Park, and boat safari on the Chobe River.



Spa Pool



Guest room

# Hotels



## **aha Chobe Marina Lodge** | 4\* Property | 66 rooms | [www.aha.co.za/chobemarina](http://www.aha.co.za/chobemarina)

Standard rooms - 60  
Honeymoon Suites - 6

Located just 10 minutes from Chobe National Park, the Chobe Marina Lodge is set on the river's edge surrounded by lush, expansive gardens. Just 20 minutes drive from Kasane Airport.

The rooms are well appointed and apart from expected features such as air-conditioning, ceiling fans and mini bars, there is also the added bonus of microwave ovens, room safes, tea/coffee making facilities and satellite television.

Group educational sessions, game drives, river cruises and tracking safaris can be complemented by an array of activities such as tiger fishing competitions or an ethnic village experience. There are plenty of options to keep an incentive group happy,

### **Dining**

When it comes to wining, dining and enjoying sun-kissed lunches, aha Chobe Marina Lodge is known for its superb food and service. Each of the eateries inspire relaxation and fine conversation. While the Mokoros Restaurant's exciting Menu includes delicious full English and continental breakfasts, fresh lunches and light meals, the Commissioner's Restaurant provides a truly intimate experience with beautiful views across the Chobe River. The lodge allows guests to enjoy the luxury of fine sunsets from the pool and riverside bars as well. Here, you can sip on refreshments while enjoying a variety of leisure activities and entertainment options.

The 100-seater conference room is supported by two additional boardrooms, state-of-the-art equipment and business centre. The Cathari Health & Beauty Spa has a mobile spa facility to further meet the varying needs of guests in search of total relaxation and wellbeing.



Pool side



Guest room

# Hotels



## **Chobe Safari Lodge** | 4\* Property | 76 rooms | [www.chobesafarilodge.com](http://www.chobesafarilodge.com)

- Luxury safari rooms - 46
- Luxury river rooms - 22
- Standard rondavels (chalets) - 8

Situated just outside Kasane village and near the entrance to the National Park, Chobe Safari Lodge is a fantastic base from which to explore the region.

With the variety of room categories there is a sufficient variety of accommodation options to suit all incentive budgets.

The safari and river rooms are set in beautiful gardens and equipped with satellite television, a safe, telephone, air conditioning and luxury en-suite bathrooms. The 8 en-suite rondavel cottages are independently positioned at the river's edge and equipped with ceiling fans.

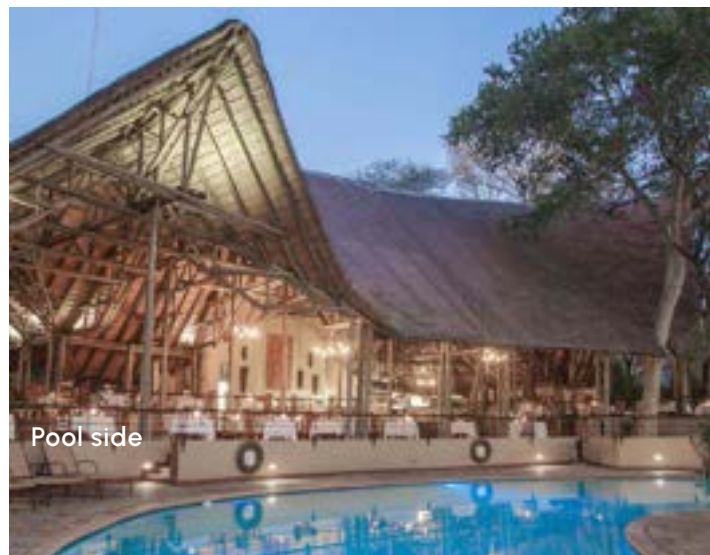
The Health & Beauty Salon is located in the quiet of the lush gardens.

The concept restaurant features indigenous and rich flavors of Africa. Choice of English or Continental Breakfast is available. Light lunch is available as a la carte or buffet. Scrumptious buffet dinners offer wide variety of meals from exotic game meats, roasts, barbecues, stir-fries, Indian cuisine, or vegetarian dishes. Two bars are located on the property giving guests a choice between Sedudu Bar Famous for the most beautiful sunsets or Cocktail Bar overlooking Caprivi flood plains.

## **Chobe Bush Lodge** | 4\* Property | 42 rooms

- Luxury en-suite rooms - 38
- Family rooms - 4

The Bush Lodge faces the grasslands on the outskirts of Kasane town. It is the sister property to Chobe Safari Lodge, located just across the road.



# Hotels



## Zambezi Queen | 5\* Property | 14 cabins | [www.zqcollection.com](http://www.zqcollection.com)

Why join the crowds on land-based game drives when can experience the thrill of it all from your own private suite aboard a luxury 42 meter house boat?

The Zambezi Queen operates in 5-star opulence, and is all about pampering, indulgence, and superior comfort. The lower and middle decks of the boat incorporate 14 cabins - all of which have their own private balconies and have been tastefully furnished with either a double or two single beds. Of the 14 air-conditioned suites, 4 are master suites, some with their own private outdoor areas.

Zambezi Queen is moored on the Namibian side of the Chobe River. Guests are collected from the Kasane Immigration Centre and transferred by motorised boat to the upstream Namibian Immigration Office (30 minute transfer). Zambezi Queen operates two and three night itineraries which depart every Monday, Wednesday and Friday.

The top deck consists of the dining room, the lounge including a wood burning fireplace, bar and sunbathing area complete with private pool. The interior furnishings have been designed by one of South Africa's top designers and this can be seen by the elegant, timeless look that has been created. Also to be found in the living area is a library of books, numerous games and a telescope for studying the stars of the night.

Water-based game viewing is available on smaller boats which enable close-up viewing in an environment where the animals do not feel threatened. Tiger and bream fishing in season. Bird watching from smaller boats.



Exterior



Guest cabin

# Hotels



## Chobe Water Villas | 5\* Property | 16 villas | [www.chobewatervillas.com](http://www.chobewatervillas.com)

Chobe Water Villa is an exclusive and intimate “boutique” Lodge in Namibia at the eastern tip of the famous Caprivi Strip now known as the Zambezi Region. The Lodge is privately situated in the 150m² Namibian Kasika Conservancy directly on the banks of the Chobe River, opposite the renowned Chobe National Park and the safari town of Kasane in Botswana. It affords unobstructed views into the park and over the world-renowned Sedudu Island.

Guests are collected from the Kasane Immigration Centre and transferred by motorised boat to the upstream Namibian Immigration Office (30 minute transfer). From there it is a short boat ride to the lodge.

The luxury Water Villas, perched on stilts over or at the water's edge, all feature a guaranteed 180 degree unobstructed view of the Chobe River and the Chobe National Park.

Activities include river boat safaris and sundowners, while land safaris are conducted on the Botswana side.

At Chobe Water Villas chefs prepare meals and dishes, which tastefully fuse African and European recipes and ingredients whilst others allow guests to experience renowned Namibian beef and venison / game products. Lunches are al fresco hot & cold buffets presenting a fusion of African and Mediterranean light and healthy dishes. Dinners are elegant, candle-lit-3-course affairs. Afternoon High Tea is served daily.

Guest areas include conversation view-pits perched on the river bank with open fires, a pool deck, with lounge, dining and sunbathing areas, sunken outdoor day bed gazebos, an indoor Cocktail Bar and Lounge and the Library Lounge.

Also available is a private, dual purpose 16-seat boardroom with a large screen TV.



Guest room

# Hotels



## Sanctuary Stanley's Camp | 5\* Property | 8 rooms | [www.sanctuaryretreats.com](http://www.sanctuaryretreats.com)

Set among ebony and sausage trees, Sanctuary Stanley's Camp is located on a 260,000 acre private concession bordering the Moremi Game Reserve. The natural wonders of the area constantly change over the season from lush green when the rain flows down the Angolan highlands, to dry savannah when the neighbouring Kalahari Desert tightens its grip on the terrain. The camp is the home of the unique Living with Elephants interaction. Walking with these rescued orphaned elephants is an uplifting experience and one that will remain with you long after you've left.

Located on a private concession bordering the Moremi Game Reserve which means they can offer walking and night drives. Seasonal mokoro excursions are available.



Guest room

## Sanctuary Chief's Camp | 5\* Property | 10 rooms | [www.sanctuaryretreats.com](http://www.sanctuaryretreats.com)

Welcome to former royal hunting reserve of Chief Moremi, in the heart of the Okavango Delta. Wildlife and wilderness are as abundant as action and adrenaline and refinement and relaxation at the remarkable remodeled luxury Camp.

The 10 bush pavilions and the luxury suite are some of the largest in the area (141 - 620 m<sup>2</sup>) and feature a private dining area.

Ideal for game drives and mokoro expeditions



Guest room

# HIGHLIGHTS



# Highlights

## **Safari**

Unsurpassed game viewing opportunities in the Chobe National Park - a exciting chance to spot all the major game species and accompanying predators. Chobe is unique in that you can do a Big Five, 4x4 land safari in the morning and a boat-based river safari in the afternoon. Each one a completely different experience. In season watch hundreds of elephants and many other animals swim across to the Chobe River islands for grazing. Amazing sightings of hippo, crocodile and teeming bird life are guaranteed.

## **Guided walks**

Guided walks by resident professional guides - there is plenty to see whether you take a stroll in the garden at your lodge, track buck by the river or embark on a walking safari of the nearby Kasane forests.

## **Victoria Falls, Zimbabwe or Zambia**

Day trips to the world famous heritage site of The Victoria Falls - simply admire the spectacular views or step up the pace with the thrill of a bungee jump or white water rafting experience. Transfer time 1 hour 30 minutes.

## **Okavango Delta**

Visit the Okavango Delta and Moremi Game Reserve - known for its extraordinary beauty, this unique wetland paradise located deep within the Kalahari Desert is a short flight from Kasane. The diverse fauna and flora are best viewed from April to October, after the annual rains.





# UNIQUE ACTIVITIES



# Unique Activities

## Mokoro Safaris

Mokoros, local dugout canoes, offer a different perspective of the bush in the company of a high trained local guide. Each June the whole area around the camp floods and turns the Okavango Delta into a labyrinth of lily-filled lagoons and streams where hippos fight for bathing rights and crocodiles wait for unwary antelope to linger too long over a drink. Poling through the byways created by the flood-waters is a magical experience that allow guests to get very close to the biggest of game and to see the world from a totally different angle. As a change from a game drive, the quiet, gentle pace of a mokoro is a real introduction to way of transport still used in the Delta by the 'river bushmen' or BaYei people. (Seasonal Activity)

## Chobe Photographic Safaris

The best way to experience the wildlife of Chobe National Park is by boat, but some boats are better than others. Especially if those boats are equipped with incredible zoom lenses and a knowledgeable guide. As you set out from Kasane you will be provided with a high-quality camera and zoom lens. The safari boats are specifically kitted-out for photographers. The onboard photo-specialist will assist with getting the perfect shot. At the end of the day walk away with a memory stick of all the photos you have taken.



Mokoro safaris



Up-close and personal

# Unique Activities

## Scenic flights over the Okavango

These scenic flights involve flying west towards the permanent delta, exposing areas which are unreachable by vehicle or boat and showcasing the sheer enormity of the Okavango Delta. There is the option of the doors being removed for unrestricted photographic opportunities. Choose between 30, 45 or 60 minute tour in a single piston engine Robinson r44 helicopter with 3 seats. This activity is offered on a year round basis. Being a personalised activity, it's up to you what time of day you would like to do the activity, however we would recommend early morning and late afternoon as these times usually provide the best light for photography. Preferred flight times can be requested on booking.

## Fishing on the Chobe River

Guests will meet up with their guide at reception and drive through to the jetty for their fishing activity. The best time for fishing in the Chobe are in winter, May, June, July and August. Type of fish guests can expect to catch is Bream and Tiger Fish. All fishing is done on a catch and release basis.



Helicopter flights



Fishing expeditions

# Dining Out



Helicopter flights

Safari dining affords you the opportunity of a varied and enjoyable experience.

The lodges pride themselves on the high quality cuisine of their chefs, who create delectable offerings of western fare with an African twist. Whether you prefer a light lunch by the poolside, a tasty picnic on safari, a delicious five star buffet meal or a traditional themed dinner within an African reed enclosure, you are guaranteed to want to come back for more!



Outdoor dining