

GREEN ROUTE
AFRICA



DRAGONFLY
AFRICA



DESTINATION SHOWCASE

Rwanda

the land of the thousand hills

Experience Extraordinary

Index

Map of Rwanda	01
Introduction	02
Easy Access	03
Climate	04
Hotels	07
Highlights	19
Unique Activities	22
Dining Out	26

Map of Rwanda



Introduction



Rwanda is a small country in East Africa. The Democratic Republic of Congo lies to its west, Uganda to its north and Burundi to the south. Rwanda also shares its eastern border with Tanzania.

Rwanda is known as the land of a thousand hills and visitors will truly understand why when visiting this beautiful country. Rwanda is blessed with a magnificent landscape and wildlife within its three national parks. The Volcanoes National Park is situated in the north of the country and is most famous for the gorilla trekking activity, Akagera National Park borders Tanzania and is therefore the best spot to view game. The Nyungwe National Park is situated in the south of Rwanda. Nyungwe National Park is home to a unique birdlife and the first Tree Canopy Walkway in Eastern Africa. Lake Kivu is a favorite getaway destination for visitors and locals alike and gives guests the opportunity to simply relax or enjoy water sports after experiencing the adventurous national parks.

Rwanda has three official languages: Kinyarwanda, French and English. The majority of the population speaks Kiswahili and Swahili is sometimes used in commercial centers. Rwanda's currency is the Rwandan franc (RFr), which is sometimes also abbreviated to 'Frw'.

Rwanda is also leading the Green Movement in Africa, having banned plastic bags completely and they have a mandatory community service day from 8:00am to 11:00am, on the last Saturday of each month called "Umuganda". By law all able bodied persons above the age of 18 and below 65 are expected to participate in volunteer community work.

Tea and coffee are essential for the country as they are the most exported products. Tea and coffee plantations can be found all over the country but especially in the southern part. Before the genocide Rwanda was known as 'a tropical Switzerland in the heart of Africa'.

The Rwandan Genocide took place in 1994. Over the course of approximately 100 days over 500, 000 people were killed, according to a Human Rights Watch estimate. It was the global impact of the Rwandan Genocide that served as impetus to the creation of the International Criminal Court. This period in Rwandan history is difficult to comprehend, but the citizens of Rwanda have done remarkably well to overcome their past and forge a new, modern democracy. Genocide memorials can be found all over the country.

Rwanda perfectly combines adventures, wildlife and history.

Easy Access



Kigali International Airport (KGL) is located in the suburb of Kanombe, approximately 14 kilometers by road, from the city centre of the country's capital, Kigali. For that reason Kigali International Airport is sometimes referred to as Kanombe International Airport. There are plans to replace this airport with a new one located south of Kigali.

RwandAir is the home carrier and operates a network of routes within Africa and some international destinations such as Brussels and Dubai. International airlines, including Air France / KLM, Qatar Airways, Turkis Airlines and Brussels Airlines serve Rwanda from their home bases.

Flights from Europe usually arrive in Rwanda in the mornings or late in the evenings. Flights to and from South Africa depart from Johannesburg with RwandAir or South African Airways.

Please note: When leaving Kigali Airport in Rwanda, visitors must pay a departure tax of US\$20. Usually this fee is included in the airline ticket.

Climate

Located just south of the equator, Rwanda is known for its tropical and temperate weather. Average daily temperatures range from 30 - 34°C (86 - 93°F), except in the highlands where a temperature between 12 and 15°C (53-59°F) is normal. Between February and May a rainy season hits the country in which the rainfall ranges from about 900 mm in the east and southeast to 1500 mm in the north and north-west volcanic highland areas.

June to September is the dry season and best time to visit for travelers. Furthermore it is the best time for visitors to go Gorilla Trekking. There is a shorter dry season between December and January.



During the dry season the sun is always shining with just the occasional, light rain showers. The high altitude of Rwanda is the main reason for the pleasant, all-year-round temperatures. It can be cold in the evening, therefore visitors should pack warmer items for nighttime and lightweight clothing for the day. Travelers should be prepared and bring rainproof clothing all year around. Kigali - the capital city of Rwanda - is situated in the center of the country with few temperature variations throughout the year.

KIGALI

Averages	JAN	FEB	MAR	APR	MAY	JUN	JUL	AUG	SEPT	OCT	NOV	DEC
Max Temp °C	27	27	27	26	26	26	27	28	28	27	27	27
Min Temp °C	17	17	17	17	16	15	15	16	17	17	17	17
Max Temp °F	81	81	81	79	79	79	81	82	82	81	81	81
Min Temp °C	63	63	63	63	61	59	59	61	63	63	63	63
Rainfall mm	90	100	130	150	120	20	10	20	50	100	150	120

HOTELS

The Bisate Lodge



Hotels



One&Only Nyungwe House | 5* Property | 22 rooms | www.oneandonlyresorts.com

House Rooms: 20
Forest Suites: 2 (2 bedroom)

In Southwest Rwanda, just south of Lake Kivu on the Burundi border, One&Only Nyungwe House is set amongst the rich tea-plantations of Gisakura, on the edge of the iconic Nyungwe National Park. The park itself covers approximately 1020km² of rainforest, bamboo, grassland, swamps and bogs, and is one of the last mountain rainforest habitats on the planet.

Locked in remote wilderness some 230 kilometres from the Kigali International Airport, One&Only Nyungwe House can be reached by road, by domestic flight, or helicopter direct to their helipad. Located in the foothills of dramatic forest-covered mountains, small clusters of rustic lodge-style retreats offer a front-row seat to the magical sights and sounds of nature.

Dining

Magical plantation views are enjoyed from dawn until dusk, out on the terrace or around the crackling fireplace. Alternatively enjoy a poolside lunch, private dining or a picnic.

Set within a beautiful working tea plantation just bordering the Nyungwe National Park, discover endless fascination within the own scenic ground, from bird watching, to wildlife spotting, stargazing and more!

Enjoy wild, up-close encounters with Nyungwe's famous flora and fauna on an expertly-led Rwanda safari. Activities include primate tracking, bird watching and canopy walk.



Guest Room



Exterior

Hotels



Mantis Akagera Hotel | 4* Property | 60 rooms | www.mantiscollection.com

Standard Rooms: 27
Balcony Rooms: 29
Balcony Suite: 1
Family Suite: 1
Presidential Suite: 1

Mantis Akagera Game Lodge stands on a hill at the southern tip of the Akagera National Park elevated above the savannah, offering a bird's-eye view and exceptional view of Lake Ihema. With 60 rooms, a conference venue, restaurant, bar, and spectacular pool deck, the lodge is the perfect home base while exploring the conservation treasures of Akager National Park or on a conferencing retreat.

Indulge in comfort and tranquility within our range of thoughtfully designed guest rooms. Each room offers a seamless fusion of modern luxury and rustic charm, with awe-inspiring views of the surrounding savannah and lake. As you unwind in your retreat, the symphony of wildlife and nature envelops you in a true African oasis.

Dining and Events

The Inzovu Restaurant makes use of on-site organic fresh and seasonal produce carefully nurtured by the lodge staff, supplemented with locally sourced organic produce. Daily meals include an African local twist to dishes that promise to tantalize your taste buds. Inzovu Restaurant is open for breakfast and dinner and offers a buffet and a la carte menu options.

Akagera National Park offers a truly exceptional bird life and wildlife experience. It is the only Big-5 reserve in Rwanda and is also home to the rare swap-dwelling Sitatunga, the rare Shoebill stork, the endangered papyrus Gonolex and the much sought-after Red-faced Barbet.

Game drive over rolling highlands, savannah plains and swamp fringed lakes.



Interior



Exterior

Hotels



Retreat by Heaven Hotel | 5* Property | 20 rooms | www.heavenrwanda.com

Luxury Pool Villa: 8
Superior King Suite: 9
Deluxe King Room: 3

The Retreat is a 20-room luxury boutique hotel located on a tree-lined street steps from Kigali City Center and 20 minutes from the airport. Eight new luxury pool villas and a new wine lounge and deck are now open.

It is Kigali's first eco-friendly resort and features solar electricity, organic toiletries, locally-crafted furniture, outdoor showers, private terraces, a yoga and meditation deck, spa, large heated saltwater swimming pool with jacuzzi and diving rocks, and an open-air fitness center.

Dinning and Events

Heaven Restaurant offers an innovative modern African menu. The Retreat is the perfect choice to host guests for first 2 nights or several days as visitors enjoy innovative, curated cultural experiences and exciting activities onsite and around Kigali.

Banana Beer Making - Guests learn the history and process of banana wine making and enjoy a tasting.

Neighborhood Walk - Our neighborhood walk offers guests an authentic fun, informative and uniquely personal insight into Rwandan culture and local life in Kigali.

Local Cooking Class - Enjoy an interactive cooking class and learn how to make a modern African recipe!

Cocktail Making Class - Engage in an interactive cocktail making class with our expert baristas, and learn how to make one of our signature cocktails in this hands-on class.

Nature in Kigali - explore the eco parks and Kigali's best preserved nature reserves.



Hotels



Wilderness Magashi | 5* Property | 8 rooms | www.wetu.com/iBrochure/en/home/31405_14788/magashi

Twin/Double Tent - 8

Perched on the edge of Lake Rwanza Kazinga's sparkling waters, Magashi is spectacular. A beautiful sanctuary to breathe out in, after a thrilling gorilla trek in Volcanoes National Park or a stay in the bustling capital of Kigali. Intimate and luxurious, the eight spacious tented suites decorated in soft, earthy tones, welcome you into a quintessential East African safari wonderland.

The main areas consist of a chic lounge, dining area, bar and pool – every corner boasting glorious views, while the expansive viewing deck is the perfect stage for sundowners, wildlife spotting and storytelling at the convivial fire pit.

With 11 different habitat types, not only is game viewing exceptional in Akagera National Park, but its spectacular scenery adds to the unique experience. Elephant and hippo find solace in the swampy grounds and lakes, while elegant Masai giraffe browse in the woodlands. Guests enjoy thrilling game viewing by boat on elevated seating for unimpeded sightings. At night, listen to the songs and stories of the land during a traditional Kugisha supper around a roaring fire with friends old and new.

Highlights

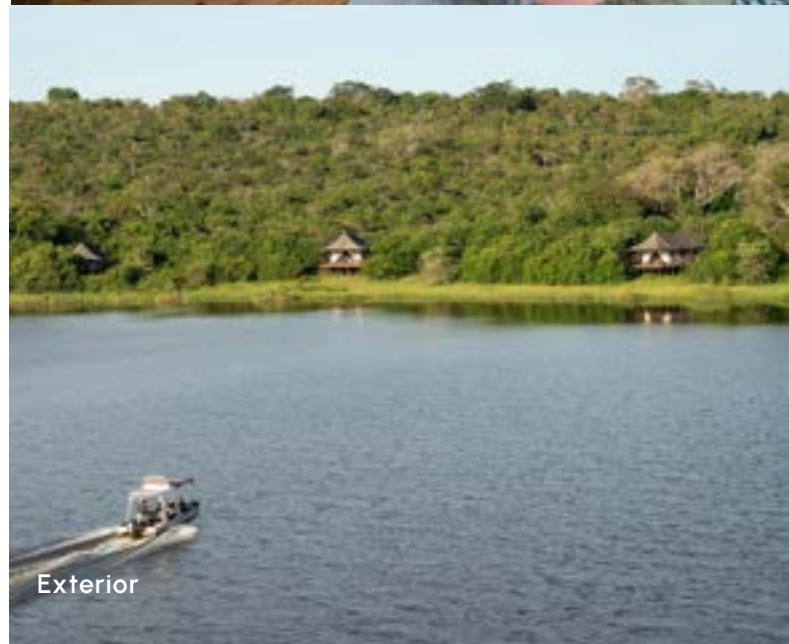
Combine a Wilderness Magashi savannah safari with gorilla trekking for a superb in-country East African experience.

As the only private wilderness area in Akagera National Park, Magashi's 6,000 exclusive-use hectares (14,826 acres) offer premium and intimate guest experiences.

A land of phenomenally diverse habitats, this is big game country. Guests can spot lions, leopards, black and white rhinos, elephants, buffalos, giraffes, zebras and hippos.

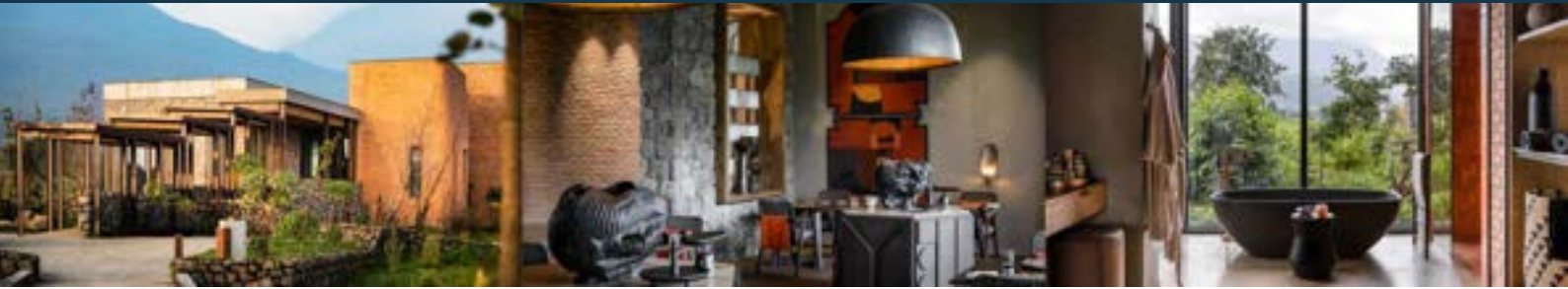


Interior



Exterior

Hotels



Singita Kwitonda Lodge | 5* Property | 13 rooms | www.singita.com

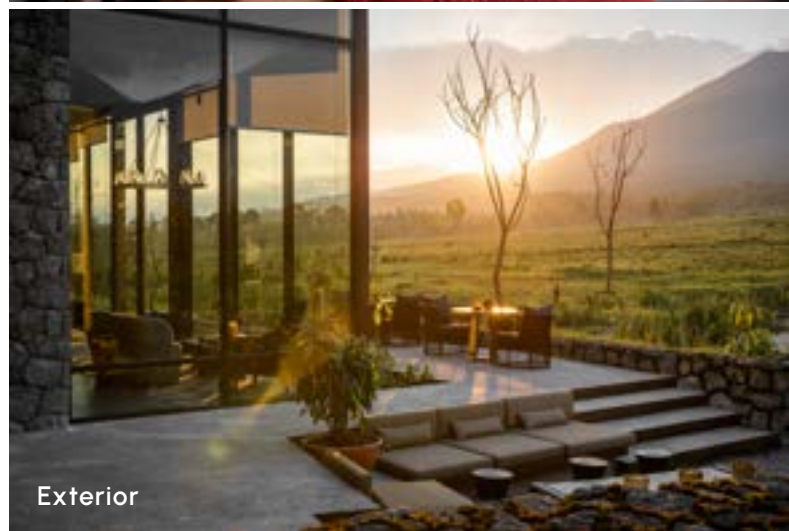
- One-bedroom suites: 7
- Two-bedroom suite: 1
- Four-bedroom suite: 1

Sitting in a landscape that is vastly different to the grassy plains of the Serengeti or the dramatic rock formations of the Kruger National Park, Singita Kwitonda Lodge and Kataza House will offer an experience unlike any of Singita's other destinations. Singita Kwitonda Lodge sits on an 178 acre (72 hectare) on the edge of Volcanoes National Park. Kwitonda lodge will follow Singita's philosophy of treading lightly on the land, which is paramount to their construction and design ethos.

With magnificent views of the Sabyinyo, Gahinga and Muhabura volcanoes, the local community has been engaged in building traditional dry stone walling on-site for specialist areas within the landscape. The lodge puts gorilla trekking within easy reach and combines perfectly with a classic safari on the plains of Singita Serengeti in Tanzania



Interior



Exterior

Hotels



One&Only Gorilla's Nest | 5* Property | 21 rooms | www.oneandonlyresorts.com

Located in the foothills of the Virunga Volcano Range, One&Only Gorilla's Nest makes the possible as you experience a once-in-a-lifetime intimate encounter with the unique and majestic mountain gorillas. Discover the wonders of Volcanoes National Park, traversing enchanting landscapes, spotting wildlife, and ascending grand volcanoes.

The thrill of up-close encounters with the endangered mountain gorillas found only in this part of the world. Lose yourself in moments that feed your curiosity, from local coffee tasting to stargazing and traditional local performances. It's all possible with our expertly curated experiences, and two selected adventures are included for your enjoyment.

One&Only Gorilla's Nest is home to 14 luxury rooms and 7 suites, all surrounded by trees making the rooms private and intimate. Traditional Imigongo art and craftsmanship fill each space with warmth and vibrant history, as expansive glass opens onto breathtaking scenes of Pyrethrum farmland, rich shambas and Eucalyptus forest.

There's no better place to practice wellness than a place where you feel truly at one with nature. Whether you wish to enhance your wholesome lifestyle, or delve into a new world of physical development, a wealth of spa treatments and experiences form part of the One&Only Spa.

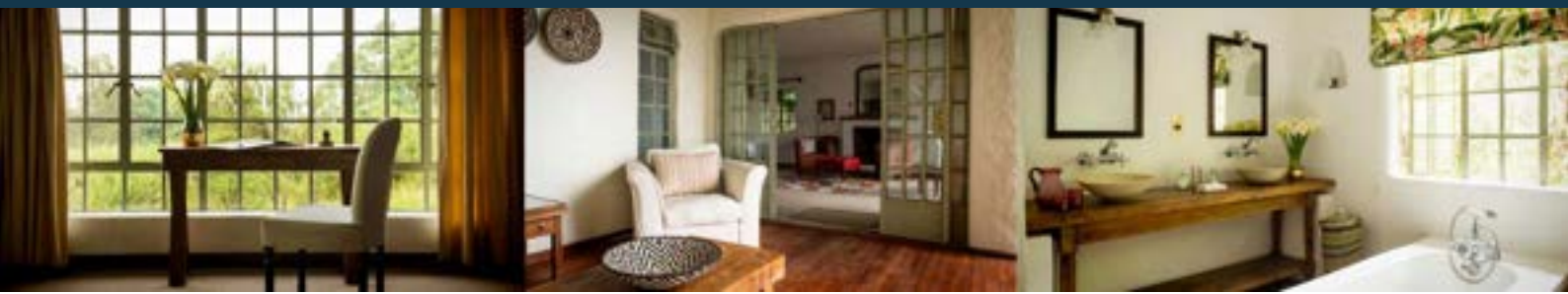


Interior



Exterior

Hotels



Sabyinyo Silverback Lodge | 5* Property | 9 suites | www.governorscamp.com

The lodge, which is operated by The Governors' Camp Collection, is positioned on the foothills of the Virungas mountain range only a few minutes away from the headquarters of the Volcanoes National Park, ideal for Gorilla Trekking.

While staying in the Sabyinyo Silverback Lodge guests can enjoy the breathtaking views over the magnificent mountain range which stretches through Rwanda, Uganda and the Republic of Congo.

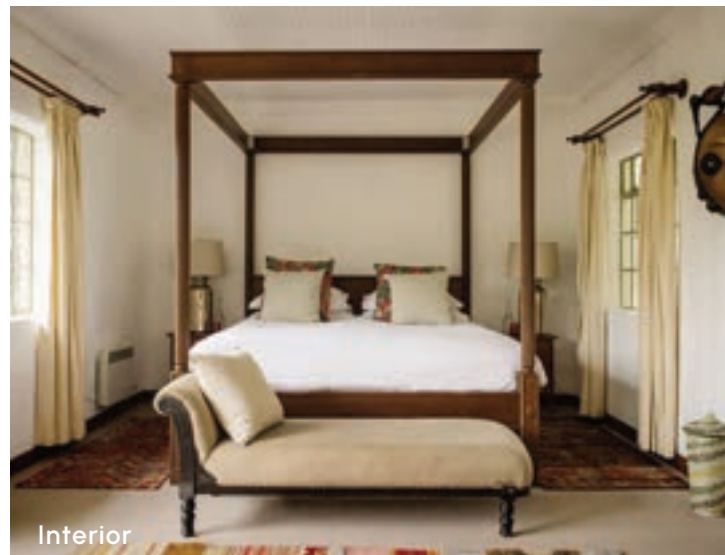
The Sabyinyo Lodge offers a variety of dinner and lunch options which guests can enjoy sitting on a terrace overlooking the hilly landscape. The lodge is known for its fresh and outstanding cuisine.

Due to the fact that the Sabyinyo Lodge only offers 9 rooms, guests can enjoy intimate and friendly hospitality.

Besides the great atmosphere, the cottages are set in beautiful surroundings and have a lovely fireplace which is kept lit and roaring by a personal butler. The bathrooms are spacious and rooms are decorated in a pan-African style. Unfortunately, the property is not suitable for disabled people and the elderly as there are stairs throughout the lodge and the access is quite steep.

The close relationship between the operations of the Lodge by Governors' Camp and the Community Trust ("SACOLA") that owns the lodge and is responsible for advancing socio-economic development and conservation objectives locally can be explored in the Community Awareness room in the main lodge building, or by visiting the various projects run by SACOLA.

The best way of getting to the lodge is via a two hour road transfer from Kigali, passing through scenic agricultural countryside.



Interior



Exterior

Hotels



Bisate Lodge | 5* Property | 6 suites | www.wilderness-safaris.com

Bisate Lodge is located in the natural amphitheater of an eroded volcanic cone - the word bisate means 'pieces' in Kinyarwanda, describing how the cone was once whole but worn away by natural erosion. The area has dramatic views of the peaks of the volcanoes Bisoke, Karisimbi and Mikeno rearing up through the Afro-alpine forests of nearby Volcanoes National Park.

Six elegant en-suite rooms maximise comfort, warmth and views while retaining environmental principles and reflecting the culture of surrounding rural Rwanda.

Blending the traditional with the modern, the exquisite guest areas features floor to ceiling windows through which guests can marvel at the world outside while enjoying a refreshing drink at the elegant bar or the contemporary wine cellar.

Bisate is within easy driving distance of Park Headquarters, from where gorilla treks depart daily. Its vision of reforestation and rehabilitation means that each guest is invited to participate in their biodiversity conservation efforts, as well as engage and meet the local community - in addition to learning about and making a far reaching positive impact on an iconic Critically Endangered species: the mountain gorilla.

Other activities in the area include cultural village visits, sightings of the golden monkey, birding and tours to places of interest such as Lakes Ruhondo and Burera, the Musanze Caves and the grave of Dian Fossey.



Guest Room



Dining

Hotels



Volcanoes Virunga Lodge | 4* Property | 10 rooms | www.volcanoessafaris.com

Deluxe: 2
Double: 6
Twin: 2

A rustic mountain lodge, Volcanoes Virunga Lodge is set on the crown of a high hill overlooking the 5 Virunga Volcanoes and has almost 360 degree views of the surrounding area.

The lodge has been described as having "one of the best views in the world". The lodge's ten cottages offer elegance and great comfort, with their 'organic, bush-chic' design reflecting the local building style. Luxurious, en-suite bathrooms, with full facilities including low-flush toilets and running solar hot water, allow you to enjoy all the comforts of home, while still being sensitive to the environment. Each cottage has its own terrace with spectacular views of the volcanoes or lakes.

Whilst it is one of our favourite properties based on setting alone, the lodge is situated 45 minutes away from the National Park headquarters, where the trekking departs from.

The stone lodge has a wide wrap-around veranda from which to appreciate the exceptional views across the lakes. Inside the lodge is a cosy lounge with a central fireplace and a small bar area. The dining room features one large table where all guests dine together. Guests can treat themselves to a relaxing massage, particularly welcome after a day trekking with the gorillas.

Aside from gorilla trekking, guests can climb a volcano, track the golden monkey, visit Dian Fossey's grave or go for gentle strolls around the picturesque villages near the lakes.

The lodge is located 2.5 hours drive from Kigali.



Guest room



Exterior

Hotels



Radisson Blu Hotel & Convention Center | 5* Property | 291 rooms | www.radisson.com

Standard Rooms: 213

Business Rooms: 68

Suites: 11

The Radisson Blu Hotel & Convention Center in Kigali is just 5 kilometers from the bustling city center and Kigali International Airport (KGL). This contemporary hotel is situated in an office park with Kigali Convention Center, which has room for up to 5,000 delegates. It's just 2 km from several government embassies, the British High Commission, the Parliament and the Supreme Court.

The Radisson Blu's 291 plush rooms and suites offer private balconies and free high-speed Wi-Fi.

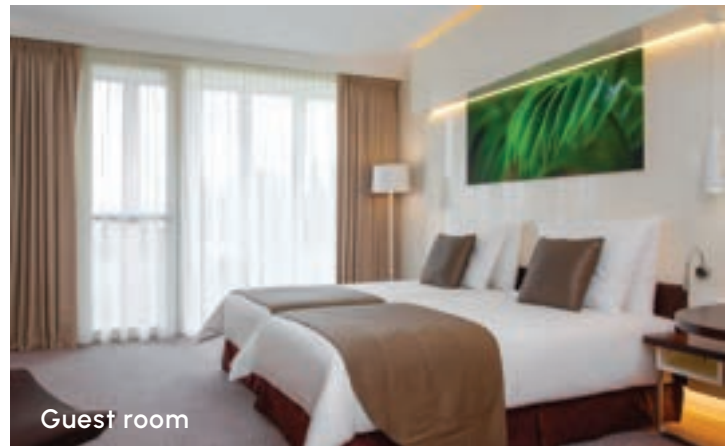
After a day exploring Kigali you can maintain your workout regimen in their fitness center and relax in the outdoor swimming pool. Opt for a steam bath at Amani Spa or simply unwind in the sauna or relaxation lounge.

Dining & Events

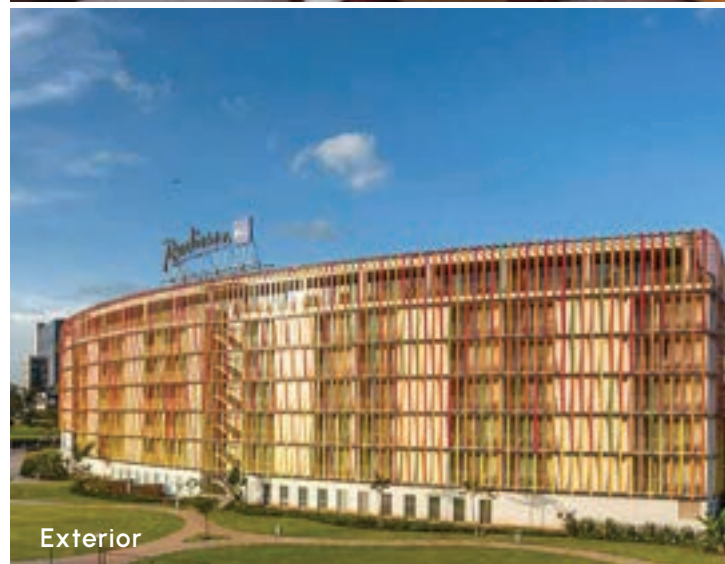
Two on-site restaurants, including *Larder Restaurant* with all-day dining, serving up continental and Rwandan favourites as well as the super breakfast buffet. Sample authentic Italian fare at *Filini Restaurant*.

For a light bite or a relaxing nightcap, visit the *Lounge Bar*.

The 18 meeting rooms, including a state-of-the-art auditorium which accommodates more than 2,000 attendees, provide a sophisticated backdrop for conferences and other social events.



Guest room



Exterior

Hotels



Kigali Marriot | 5* Property | 254 rooms | www.marriot.com

Deluxe & Club Rooms: 229

Suites: 25

Experience the excitement of Rwanda's capital city with a visit to Kigali Marriot Hotel. Conveniently situated near the financial district, along KN3 Avenue, this hotel showcases luxury amenities and impeccable service.

Make yourself comfortable in one of the stylish rooms or suites, and enjoy perks such as floor-to-ceiling windows, complimentary internet access and plush pillow-top bedding. Additional amenities in your accommodation include spacious marble bathrooms and flat-screen TVs. Elsewhere within the hotel treat yourself to a massage at Saray Spa to take a refreshing dip in the outdoor pool.

Dining & Events

Cucina - This relaxed Italian restaurant features authentic flavors and a welcoming atmosphere.

Iriba Bar & Terrace offers speciality coffee and convenient to-go snacks, as well as delicious lunch offerings.

Soko - Open for breakfast, lunch and dinner, this modern restaurant showcases global cuisine and an airy, atrium-style ambiance

Sarabi Grill - Treat yourself to one of the best burgers in Kigali at Sarabi Grill

Choose from 10 meeting rooms, with a maximum capacity of 600 guests.



Guest room



Exterior

Hotels



Kigali Serena Hotel | 5* Property | 148 rooms | www.serenahotels.com

Standard rooms: 54

Deluxe rooms: 25

Superior rooms: 37

Prime rooms: 7

Studio Suites: 18

Other Suites: 7 (including 1 Presidential)

Well positioned on one of Kigali's most charming boulevards, this 5 star property is the perfect place to stay when on a trip to Kigali. Offering elegant yet comfortable accommodation, the hotel showcases Rwandan art work and features The Maisha Health Club and spa.

All 148 rooms have recently renovated in a pan-African style, with either twin or king sized beds. Most of the rooms are non smoker rooms but smoker rooms are available on request.

The Serena Hotel Kigali is located only 10km from Kigali International Airport.

Offering excellent local cuisine, the Kigali Serena has a variety of meal choice. The popular Milima Restaurant offers a daily lunch buffet and buffer or a la carte dinner. The hotel offers not only international and European cuisine but also local Rwandan cuisine. The globally inspired menus are often accompanied by suitable and colourful entertainment.

The Sokoni Café and Bar is the best choice to enjoy snacks and light meals during the day, while overlooking the pool area.

An International Conference Centre is situated within the hotel complex. Kigali is not only the country's most important business hub. The extensive conference centre with 500-seater auditorium and well-appointed ballroom is the ideal place to do business in Rwanda. In addition the venue offers WIFI connection and an international press centre.



Guest room



Exterior

Hotels



Hotel Des Mille Collines | 4* Property | 112 rooms | www.millecollines.rw

Rooms: 104

Suites: 8

Inaugurated in 1973 as the first grand hotel of the country and receiving globally a lot of attention since the Hollywood movie "Hotel Rwanda" in 2004 - Hotel des Mille Collines is surely the most famous hotel in Rwanda. Located in the heart of the central business district and just a 20-minutes drive from Kigali International Airport.

Enjoy the spectacular views of the modern Kigali city skylines as you go to sleep and when you awake relaxing in your room or on private balcony.

Dining & Events

La Terrasse - All-day dining overlooking the lush green gardens in the heart of Kigali

Le Panorama - Kigali's true signature dining experience

Lieu de Vie - an all day pool bar

Combine business with pleasure. Located at the top floor of the building, the ball room and meeting rooms benefit from stunning views. The hotel has one main conference room, which can accommodate up to 150 people. This main room can further be divide into two smaller parts. There are also three small meeting rooms with a capacity for 10-12 persons each.



Guest room



Pool Bar

HIGHLIGHTS



Highlights

National Parks

Rwanda is known for its three major National Parks. The three National Parks - Volcanoes National Park, Akagera National Park and the Nyungwe National Park - are all very different from each other. For that reason Rwanda is able to offer a variety of unique activities and diverse nature experiences. Visitors can explore the magnificent rainforest, unique wildlife, various trails, the Canopy Walkway or get to trek monkeys and gorillas. The Akagera National Park is a good place to go for a game drive and spot Africa's most popular animals. This combination gives guests the opportunity to explore the best of Africa in an adventurous and unique way.

Volcanoes National Park

This National Park is situated in the northwest of Rwanda. The magnificent mountain range is home to the rare mountain gorilla and various other species. The mountain range is nearly all covered with rich, green rainforest.

Visitors can enjoy the beautiful landscape by monkey's, chimpanzees and gorillas (e.g. the rare Golden Monkey) or walk some of the amazing trails. Guests can also enjoy a lesson from the Gorilla Doctors and learn all about the mountain gorillas.

Furthermore a cultural village is situated in the rainforest which welcomes traveller to explore the indigenous and deep Rwanda culture.



Traditional entertainers



Volcanoes

Highlights

Akagera National Park

The Akagera National Park - set at a relatively low altitude - is characterized by the savannah landscape with lakes that follow the meandering course of the Akagera River and open grasslands. Akagera National Park is the place to spot herds of elephant, zebra, giraffe, buffalo and other wild animals. Crocodiles and hippos can be found around the lakes throughout the day. Furthermore visitors are able to spot some of the water birds flying around the lake. In addition helicopter flights are offered to spot animals from above and enjoy beautiful views of the land of the thousand hills.

Kigali

The rapidly growing capital city is situated in the centre of Rwanda and is the country's most important business hub, with the international airport connecting Rwanda to the rest of the world.

The compact central business district is surrounded by a colourful and busy commercial district with numerous shops and restaurants. Various memorials remind guests of the dark history of this country. The genocide should become a part of every journey to Rwanda. A historical city tour is also recommended. Tours include the Genocide Museum, the local craft market, the Franco- Rwandan cultural centre and other museums and memorials. The exhibition centres which include the Education Centre, Memorial Gardens and the National Documentation Centre. In addition visitors can enjoy the Rwandan cuisine and nightlife.

Nyungwe National Park

The Nyungwe National Park is one of the last places in Africa which maintains an intact mid-elevation forest. Not only is Nyungwe National Park the source of Africa's great rivers, but also Rwanda's premier water catchment - holding 2/3 of the natural resources. Moreover this special type of forest is habitat to many species and an important part of the Rwanda ecosystem.

Thirteen species of primates, including the Angola colobus can be found in the largest mountain rainforest in Africa.

Visitors can enjoy a unique monkey trekking adventure or explore nature by walking some of the trails.

The first Tree Canopy Walk in Eastern Africa was recently opened in this area.



UNIQUE ACTIVITES



Unique Activities

Gorilla Trekking

The number one activity and highlight in Rwanda is the Mountain Gorilla trekking. There are only 20 troops left in the Volcanoes National Park in Rwanda, and a limited amount of permits are issued daily for guests to experience this life changing experience. They are without doubt on the brink of extinction.

Gorilla families are very territorial and will generally be found in a similar region. With this knowledge, the park rangers have categorised the various gorilla treks into easy, medium and hard treks.

Easy generally means a 20-minute walk up to the edge of the park through farmland areas and a further 15-30 minute walk inside the actual forest.

Medium generally means a 20-minute walk up to the edge of the park through the farm and then a 45 - 75 minute walk uphill, inside the actual forest.

Hard - means a 20 minute walk up to the edge of the park through the farms and then a serious climb up to the top reach of the mountains. These are generally not offered, except in the peak season, and guests would need to be really fit to reach these Gorillas.

Once you reach your family of Gorillas a few rules are in place; to minimise the possibility of transmitting human diseases, visitors are asked to maintain a distance of 7m from the gorillas. Guests need to be fit and healthy when visiting the gorillas.

Viewing time is limited to one hour and a maximum of 8 visitors are allowed per group. Photography is allowed, although no flash photography of the gorillas is permitted.

Cultural Village Visit

A good way to experience the Rwandan culture is to visit one of the cultural villages. There are a few around the country.

Guests get in touch with an incredible tradition by singing and dancing with the local people. Visits include a local food tasting, a village tour, nature hikes, the waterfall visit, basket weaving, cultural crafts and banana beer brewing. Sometimes guests can witness a wedding ceremony and learn about traditional medicine.



Gorilla Trekking



Cultural Village Visit

Unique Activities

Guided Hikes in Volcanoes National Park

At 3711 meters Mount Bisoke volcano is located on the border of the DRC and Rwanda. The guided hike to the summit is strenuous and requires a full day to complete. However, once at the top it is extremely beautiful and really worth the effort as you are rewarded with sweeping views of the rainforest and the amazing crater lake.

Dian Fossey's grave and Research Centre

Dian Fossey established the Karisoke Research Centre in 1967 in the saddle of Bisoke and Karisimbi volcanoes at an elevation of some 3000 metres. The trail leading to her remote rainforest camp and grave - which is set alongside the graves of her beloved gorillas - and the remains of the research centre is a spectacular, if challenging hike up steep slopes where orchids, birdlife and even occasional black-fronted duiker and bushbuck can be seen.

Golden Monkey Trekking

Tracking of the golden monkeys is another thrilling experience that allows visitors to interact with these beautiful creatures. They are endemic to the Virunga Mountain Ranges and have a prominent golden fur coat, adding to their unique attractiveness. The golden monkey expedition is mostly done as an additional activity to gorilla trekking in Volcanoes National Park. Guests will need to add on an additional day.

These monkeys are easily found as they mostly live at the bottom of the Volcano Mountains in the bamboo forest. Trackers are able to locate them within an hour of setting out.



Hiking



Golden Monkey

Unique Activities

Question Coffee

Immerse yourself in coffee culture, history, making and tasting to discover unimaginable beauty and abundance. Master Class - Ready to take a deep dive into how your coffee makes its way from seed to cup? Here in the heart of coffee country, we invite you to learn how Rwanda's world class coffee is grown, harvested, roasted, brewed and served. Guests will pick coffee cherries straight from the trees in our coffee garden, then experience the transformation from seed to cup, including smelling, tasting and making your very own coffee blend that you can take home! Our coffee also makes for great gifts to bring home to your friends and family and for your own home brewing.

Nyamirambo Womens Centre

Nyamirambo Women's Center (NWC), a Rwandan NGO, was launched at the end of 2007 by 18 Rwandese women living in Nyamirambo, Kigali.

Together they created a project which aimed to address gender-based violence, gender inequality and discrimination. Today, NWC's mission is to provide education and vocational training to women who do not have the means to pay for such training on their own, so that they can gain better opportunities for employment.

Niyo Art Gallery

Niyo Arts center is a place for creativity to thrive; a safe haven where Rwandan artists can come and experiment with their art form, be it painting, sculpture, dance, music or drumming.

The artists in residence come from all over Africa, so you can expect to see a vast array of African art on display. In addition to the art, we also host musical and theatrical performances throughout the year.

Its focus is on contemporary African art, but it also has a strong foundation in traditional drumming and dance. Art center has two specific objectives: To provide a space where Rwandan creative artists can explore their talents and express themselves freely.



Master Class



Niyo Art Gallery

Dinning Out

The cuisine of Rwanda is based on locally produced, and often organic food. Local dishes are made with home grown products such as bananas, plantains, pulses, sweet potatoes, beans and cassava. Most of the Rwandan only eat meat a few times during the month and their diet is often based on potatoes which can be seen as a by product of the colonial time.

Restaurants and hotels serve both international and continental cuisine.

Specialities:

- Ugali (or bugali): this is a paste made of maize or cassava and water to form a porridge
- Posho
- Cassava leaves
- Goat meat

Rwanda is known for its teas and coffees as well as its banana beer. Up until now the banana beer has been produced in the cultural villages and served all over the country. Another regional drink is the locally brewed beer called "Mutzig".

Rwanda is not as sophisticated as other destinations in Africa but it does offer some choice for special venues, in magnificent locations, with breath-taking views.

Nyurah Restaurant

A holistic culinary excellence through food and service. The name Nyurah is derived from the Kinyarwanda term 'Kunywura' meaning 'to delight' and that is the aim, to create experiences that leave you deeply satisfied.

Resident Chefs, Fidel Nshimiyimana and Odette Nyiranubaha, and their team design a continuously finest seasonal ingredients from Rwanda with innovative recipes from across the continent.

Great care, thought, individuality and creativity go into the preparation of each dish. Equal dedication is applied by the Nyurah sommelier team in selecting wines and spirits offering to complement the gourmet cuisine.



Nyurah Restaurant



Traditional cuisine

Dinning Out

Fusion at The Retreat Hotel

In 2018, the founders of Kigali's top restaurant, Heaven, opened a fine dining restaurant which merges culinary traditions from around the world with Rwandan ingredients.

Fusion – the restaurant at The Retreat – takes culinary traditions from Italy, Mauritius, Morocco and elsewhere and blends them into a single harmonious offer. Perched beside

The Retreat's glorious saltwater pool, rock gardens and native plantings, Fusion is the most elegant spot in Kigali to explore new flavours and experience first-class hospitality.

Known for their International cuisine with local flavors. They work closely with local farmers, focus on quality ingredients and cultivate an onsite organic garden where fresh herbs and lettuce are hand picked daily.

Have fun with cocktail making demos, traditional banana wine workshop, and cooking classes!

Fillini at Radisson Blu Hotel

Go on a gastronomic journey of Italian cuisine at Filini Bar & Restaurant. Opt for traditional dishes or choose one with a modern twist from our menu. Talk to friendly staff for recommendations. Enjoy a unique dining experience as you admire our expert chefs in action in the restaurant's open kitchen as they whip up delectable delicacies for you.

An extensive wine list complements our varied menu offering you the best of Italy. Take advantage of the year-long pleasant weather and dine outdoors on the picturesque terrace.



Fillini at Radisson Blu Hotel



Fusion at The Retreat Hotel